

Anti-C2CD4D antibody



Catalog Number: 175258

Product name

Anti-C2CD4D antibody

Specificity

Human, Mouse, Rat, Pig, Cow

Antibody description

Rabbit polyclonal antibody to C2CD4D

Preparation

This antigen of this antibody was klh conjugated synthetic peptide derived from human c2cd4d 101-200/353

Formulation

Liquid, 0.01M TBS(pH7.4) with 1% BSA, 0.03% Proclin300 and 50% Glycerol.

Storage

Store at -20°C for one year. Avoid repeated freeze/thaw cycles. The lyophilized antibody is stable at room temperature for at least one month and for greater than a year when kept at -20°C. When reconstituted in sterile pH 7.4 0.01M PBS or diluent of antibody the antibody is stable for at least two weeks at 2-4°C.

Clonality

Polyclonal

Ig Type

Rabbit IgG

Applications

WB

Dilutions

WB:1:500-2000

Validations

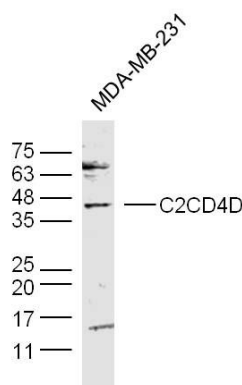


Fig1: Lane 1: (Human/cell line)MDA-MB-231lysates probed withC2CD4DPolyclonal Antibody, Unconjugated (Catalog #175258#) at 1:300 overnight at 4xC. Followed by a conjugated secondary antibody (Secondary Catalog #926-32211) at 1:10000 for 60 min at 37xC.