

PPP1CC Polyclonal Antibody



Catalog Number: 164258

Product name

PPP1CC Polyclonal Antibody

Specificity

Human, Mouse, Rat

Antibody description

Polyclonal antibody to PPP1CC

Preparation

Antigen: Recombinant fusion protein containing a sequence corresponding to amino acids 1-323 of human PPP1CC (NP_002701.1).

Formulation

PBS with 0.02% sodium azide, 50% glycerol, pH7.3.

Storage

Store at -20°C. Avoid freeze / thaw cycles.

Clonality

Polyclonal

Ig Type

Rabbit IgG

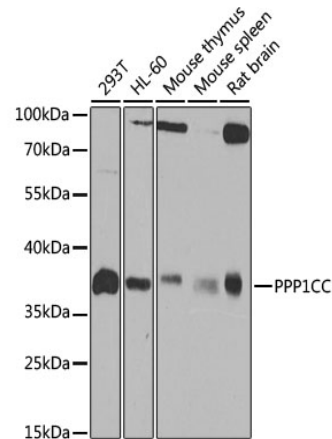
Applications

WB, IHC, ChIP

Dilutions

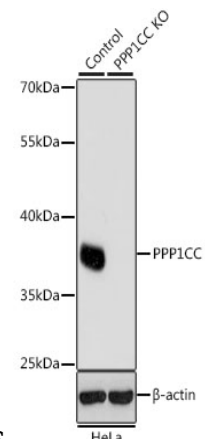
WB 1:200 - 1:2000
IHC 1:50 - 1:200
CHIP 1:50 - 1:200

Validations



Western blot - PPP1CC Polyclonal Antibody

Western blot analysis of extracts of various cell lines, using PPP1CC antibody at 1:1000 dilution. Secondary antibody: HRP Goat Anti-Rabbit IgG (H+L) at 1:10000 dilution. Lysates/proteins: 25ug per lane. Blocking buffer: 3% nonfat dry milk in TBST. Detection: ECL



Basic Kit .Exposure time: 90s.

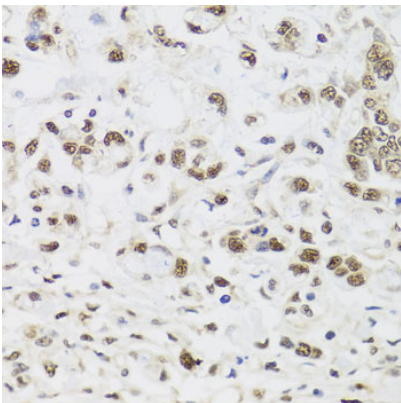
Western blot - PPP1CC Polyclonal Antibody

Western blot analysis of extracts from normal (control) and PPP1CC knockout HeLa cells, using PPP1CC antibody at 1:1000 dilution. Secondary antibody: HRP Goat Anti-Rabbit IgG (H+L) at 1:10000 dilution. Lysates/proteins: 25ug per lane. Blocking buffer: 3% nonfat dry milk in TBST. Detection: ECL Basic Kit .Exposure time: 1s.

PPP1CC Polyclonal Antibody

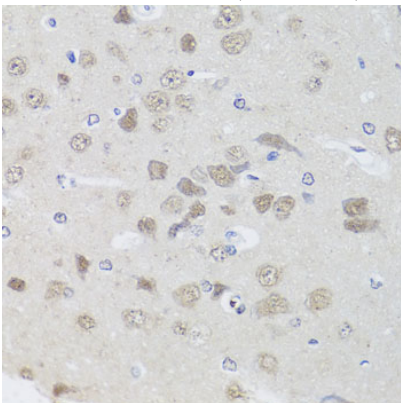


Catalog Number: 164258



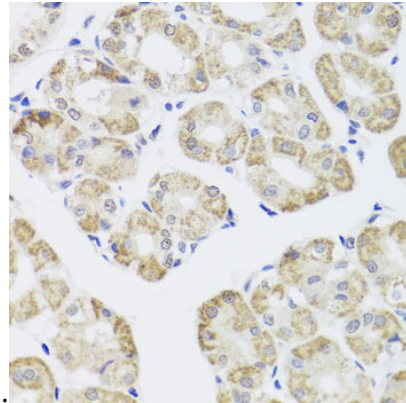
Immunohistochemistry - PPP1CC Polyclonal Antibody

Immunohistochemistry of paraffin-embedded human gastric cancer using PPP1CC antibody at dilution of 1:100 (40x lens).



Immunohistochemistry - PPP1CC Polyclonal Antibody

Immunohistochemistry of paraffin-embedded rat brain using PPP1CC antibody at dilution of 1:100



(40x lens).

Immunohistochemistry - PPP1CC Polyclonal Antibody

Immunohistochemistry of paraffin-embedded human stomach using PPP1CC antibody at dilution of 1:100 (40x lens).