

Human KLK10/NES1/PRSSL1 (His tag) recombinant protein



Catalog Number: 519958

General Information

Gene Name Synonym

Kallikrein-10, Normal Epithelial Cell-Specific 1, Protease Serine-Like 1, KLK10, NES1, PRSSL1

Protein Construction

A DNA sequence encoding the Human KLK10/NES1/PRSSL1 Ala31-Asn276 is expressed with a 6His tag at the C-terminus.

Organism

Human

Expression Host

Human Cells

QC Testing

Purity

>95% as determined by SDS-PAGE.

Endotoxin

<1.0 EU per μg protein as determined by the LAL method.

Stability

Store for up to 6 months at -20°C

Formulation

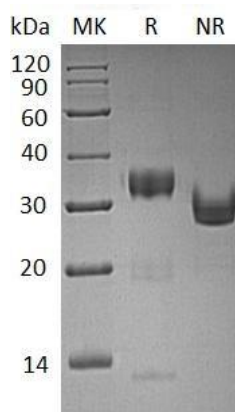
Supplied as a $0.2\ \mu\text{m}$ filtered solution of 20mM TrisHCl, 150mM NaCl, pH 8.0.

Usage Guide

Storage

Store at $<-20^{\circ}\text{C}$, minimize freeze-thaw cycles.

SDS-PAGE



Human KLK10/NES1/PRSSL1 (His tag)
recombinant protein