

CCDC102A antibody



Catalog Number: 108958

Product name

CCDC102A antibody

Immunogen

[Human CCDC102A Recombinant protein \(GST tag\)](#)

Specificity

Human; other species not tested.

Antibody description

CCDC102A Rabbit Polyclonal antibody. Positive WB detected in HeLa cells. Observed molecular weight by Western-blot: 63-65 kDa

Preparation

This antibody was obtained by immunization of CCDC102A recombinant protein (Accession Number: NM_033212). Purification method: Antigen affinity purified.

Formulation

PBS with 0.1% sodium azide and 50% glycerol pH 7.3.

Storage

Store at -20°C. DO NOT ALIQUOT

Clonality

Polyclonal

Ig Type

Rabbit IgG

Applications

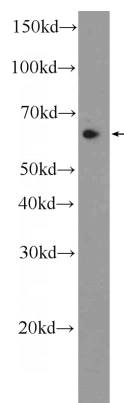
ELISA, WB

Dilutions

Recommended Dilution:

WB: 1:500-1:5000

Validations



HeLa cells were subjected to SDS PAGE followed by western blot with Catalog No:108958(CCDC102A Antibody) at dilution of 1:1000