

Anti-PIM2 Rabbit antibody



Catalog Number: 167958

Product name

Anti-PIM2 Rabbit antibody

Specificity

Human, Mouse, Rat

Antibody description

PIM2 Rabbit monoclonal antibody

Preparation

Antigen: A synthetic peptide of human PIM2

Formulation

50nM Tris-Glycine(pH 7.4), 0.15M NaCl,
40%Glycerol, 0.01% sodium azide and 0.05% BSA

Storage

Store at 4°C short term. Store at -20°C long term.
Avoid freeze / thaw cycle.

Clonality

Monoclonal

Ig Type

Rabbit IgG

Applications

WB, ICC/IF, IP

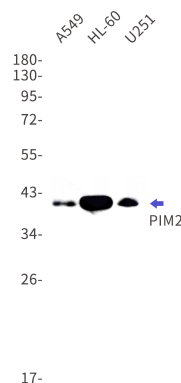
Dilutions

WB: 1/1000

ICC/IF: 1/20

IP: 1/20

Validations



Western blot detection of PIM2 in A549,HL-60,U251 cell lysates using PIM2 Rabbit mAb(1:1000 diluted).Predicted band size:34kDa.Observed band size:40,38,34kDa.