

BXDC2 antibody

Catalog Number: 108558

Product name

BXDC2 antibody

IHC: 1:20-1:200

IF: 1:10-1:100

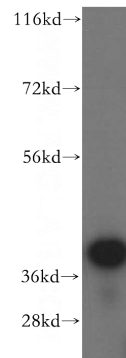
Specificity

Human, Mouse, Rat; other species not tested.

Validations

Antibody description

BXDC2 Rabbit Polyclonal antibody. Positive WB detected in human liver tissue, HEK-293 cells, HeLa cells. Positive IF detected in HepG2 cells. Positive IHC detected in human pancreas tissue. Observed molecular weight by Western-blot: 41 kDa



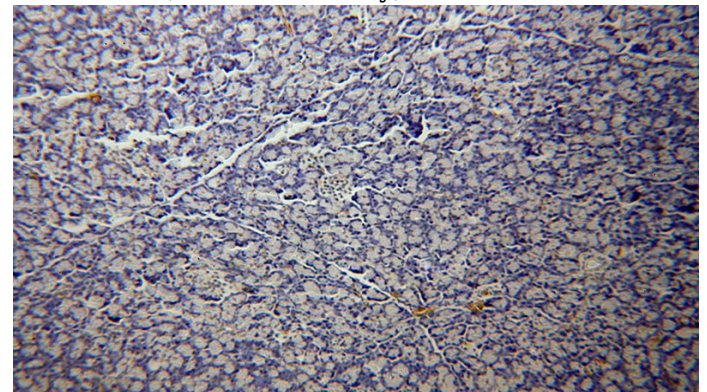
Preparation

This antibody was obtained by immunization of BXDC2 recombinant protein (Accession Number: NM_018321). Purification method: Antigen affinity purified.

human liver tissue were subjected to SDS PAGE followed by western blot with Catalog No:108558(BXDC2 antibody) at dilution of 1:500

Formulation

PBS with 0.02% sodium azide and 50% glycerol pH 7.3.



Storage

Store at -20°C. DO NOT ALIQUOT

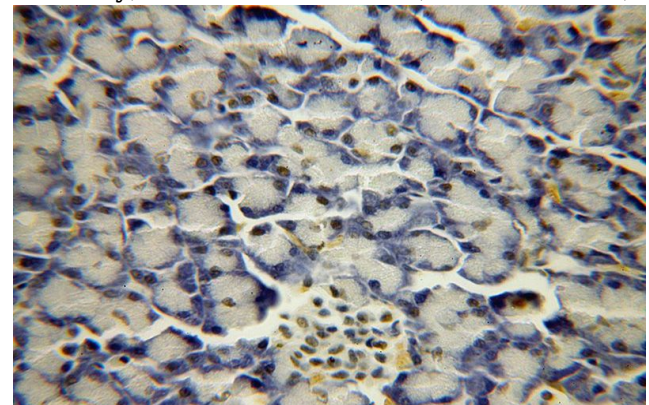
Clonality

Polyclonal

Immunohistochemical of paraffin-embedded human pancreas using Catalog No:108558(BXDC2 antibody) at dilution of 1:100 (under 10x lens)

Ig Type

Rabbit IgG



Applications

ELISA, WB, IHC, IF

Dilutions

Recommended Dilution:

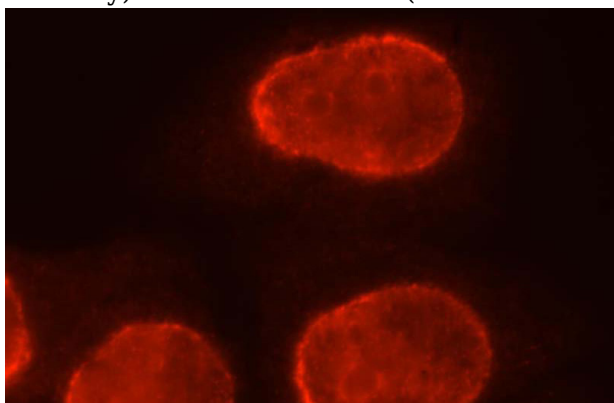
WB: 1:500-1:5000

Immunohistochemical of paraffin-embedded human pancreas using Catalog No:108558(BXDC2

BXDC2 antibody

Catalog Number: 108558

antibody) at dilution of 1:100 (under 40x lens)



Immunofluorescent analysis of HepG2 cells, using BXDC2 antibody Catalog No:108558 at 1:25 dilution and Rhodamine-labeled goat anti-rabbit IgG (red).