

SPCS1 antibody



Catalog Number: 115558

Product name

SPCS1 antibody

IHC: 1:20-1:200

IF: 1:10-1:100

Specificity

Human, Mouse, Rat; other species not tested.

Antibody description

SPCS1 Rabbit Polyclonal antibody. Positive WB detected in human skin tissue, BxPC-3 cells, PC-3 cells. Positive IF detected in BxPC-3 cells. Positive IHC detected in human prostate cancer tissue. Observed molecular weight by Western-blot: 12 kDa

Preparation

This antibody was obtained by immunization of SPCS1 recombinant protein (Accession Number: BC000884). Purification method: Antigen affinity purified.

Formulation

PBS with 0.1% sodium azide and 50% glycerol pH 7.3.

Storage

Store at -20°C. DO NOT ALIQUOT

Clonality

Polyclonal

Ig Type

Rabbit IgG

Applications

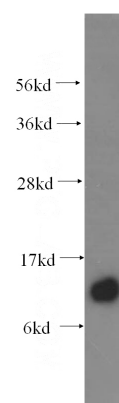
ELISA, WB, IHC, IF

Dilutions

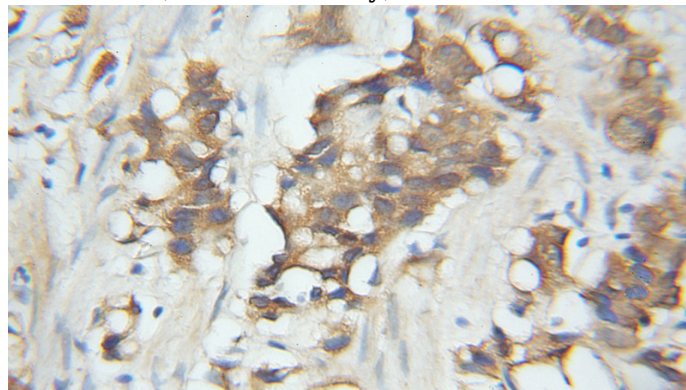
Recommended Dilution:

WB: 1:500-1:5000

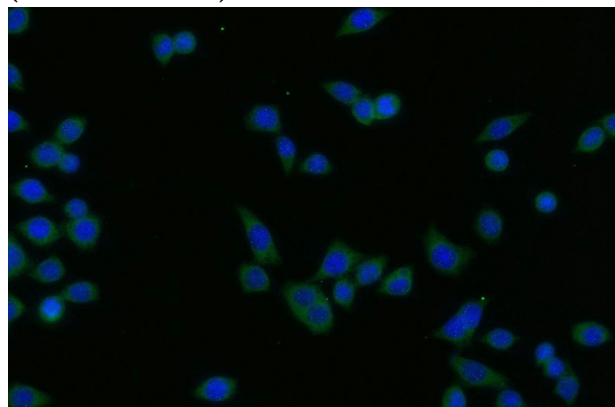
Validations



human skin tissue were subjected to SDS PAGE followed by western blot with Catalog No:115558 (SPCS1 antibody) at dilution of 1:400



Immunohistochemical of paraffin-embedded human prostate cancer using Catalog No:115558 (SPCS1 antibody) at dilution of 1:50 (under 10x lens)



Immunofluorescent analysis of BxPC-3 cells using

SPCS1 antibody



Catalog Number: 115558

Catalog No:115558(SPCS1 Antibody) at dilution of 1:25 and Alexa Fluor 488-conjugated AffiniPure Goat Anti-Rabbit IgG(H+L)