

# CISD2-Specific antibody



Catalog Number: 107158

## Product name

CISD2-Specific antibody

## Specificity

Human; other species not tested.

## Antibody description

CISD2-Specific Mouse Monoclonal antibody. Positive IHC detected in human kidney tissue, human testis tissue. Positive WB detected in MCF7 cells, human brain tissue. Observed molecular weight by Western-blot: 15 kDa

## Preparation

This antibody was obtained by immunization of recombinant protein (Accession Number: NM\_001008388). Purification method: Protein A purified.

## Formulation

PBS with 0.02% sodium azide and 50% glycerol pH 7.3.

## Storage

Store at -20°C. DO NOT ALIQUOT

## Clonality

Monoclonal

## Ig Type

Mouse IgG2b

## Applications

ELISA, WB, IHC

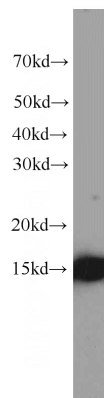
## Dilutions

Recommended Dilution:

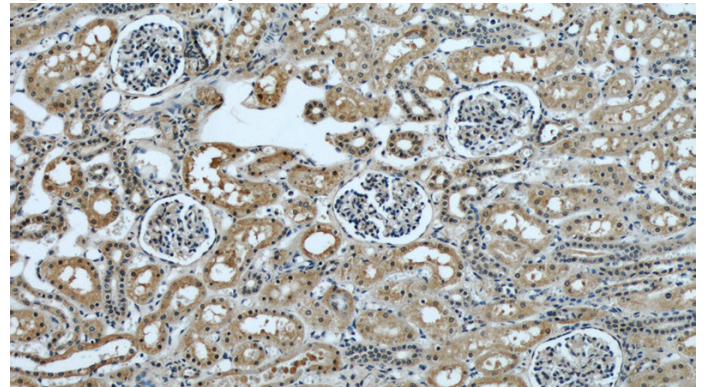
WB: 1:500-1:5000

IHC: 1:20-1:200

## Validations



MCF7 cells were subjected to SDS PAGE followed by western blot with Catalog No:107158(CISD2-Specific antibody) at dilution of 1:1000



Immunohistochemical of paraffin-embedded human kidney using Catalog No:107158(CISD2-Specific antibody) at dilution of 1:50 (under 10x lens)