

SFTPC antibody



Catalog Number: 115158

Product name

SFTPC antibody

Specificity

Human, Rat; other species not tested.

Antibody description

SFTPC Rabbit Polyclonal antibody. Positive IHC detected in human lung cancer tissue, human testis tissue. Positive WB detected in A549 cells. Observed molecular weight by Western-blot: 21-25 kDa

Preparation

This antibody was obtained by immunization of SFTPC recombinant protein (Accession Number: NM_001385653). Purification method: Antigen affinity purified.

Formulation

PBS with 0.1% sodium azide and 50% glycerol pH 7.3.

Storage

Store at -20°C. DO NOT ALIQUOT

Clonality

Polyclonal

Ig Type

Rabbit IgG

Applications

ELISA, WB, IHC

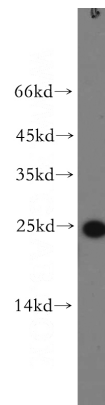
Dilutions

Recommended Dilution:

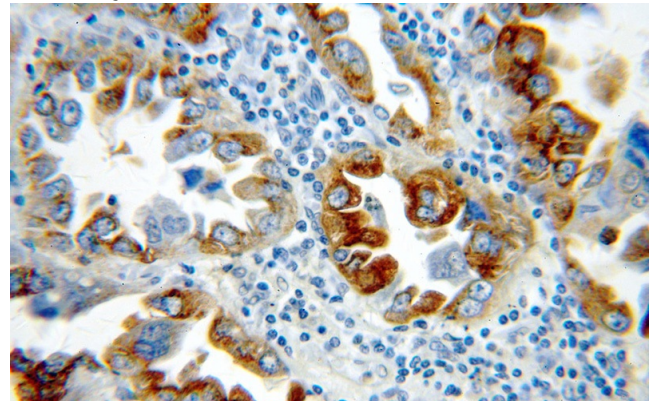
WB: 1:200-1:1000

IHC: 1:20-1:200

Validations



A549 cells were subjected to SDS PAGE followed by western blot with Catalog No:115158(SFTPC antibody) at dilution of 1:300



Immunohistochemical of paraffin-embedded human lung cancer using Catalog No:115158(SFTPC antibody) at dilution of 1:50 (under 40x lens)