

# Anti-CXCL1 antibody



Catalog Number: 100158

## Product name

Anti-CXCL1 antibody

## Specificity

Human CXCL1

## Antibody description

Rabbit polyclonal to CXCL1

## Preparation

Produced in rabbits immunized with a synthetic peptide corresponding to the center region of the human CXCL1, and purified by antigen affinity chromatography.

## Formulation

0.2 µm filtered solution in PBS

## Storage

This antibody can be stored at 2°C-8°C for one month without detectable loss of activity. Antibody products are stable for twelve months from date of receipt when stored at -20°C to -80°C.

Preservative-Free.

Sodium azide is recommended to avoid contamination (final concentration 0.05%-0.1%). It is toxic to cells and should be disposed of

properly. Avoid repeated freeze-thaw cycles.

## Clonality

Polyclonal

## Ig Type

Rabbit IgG

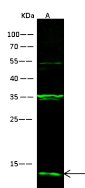
## Applications

WB

## Dilutions

WB: 10-20 µg/ml

## Validations



Items	Lanes	A
Sample (whole cell lysate)		Jurkat
Sample Volume (µg/lane)		30
Gel		13% SDS-PAGE reducing gel
Recommended Concentration		10-20 µg/ml
Secondary Antibody		Dylight 800-labeled Antibody to Rabbit IgG (H+L) at 1:5000 dilution
Developed using Odyssey imaging system		
Explanation		Predicted band size : 13 kDa Observed band size : 13 kDa Additional bands at : 50 kDa and 35 kDa (We are unsure as to the identity of these extra bands. They are possible non-specific bindings).

CXCL1 / MGSA / NAP-3 Antibody, Rabbit PAb, Antigen Affinity Purified, Western blot