

# CARD9 antibody



Catalog Number: 108858

## Product name

CARD9 antibody

## Specificity

Human, Mouse, Rat; other species not tested.

## Antibody description

CARD9 Rabbit Polyclonal antibody. Positive WB detected in PC-3 cells, HEK-293 cells, HL-60 cells, human placenta tissue. Observed molecular weight by Western-blot: 50-59kd

## Preparation

This antibody was obtained by immunization of CARD9 recombinant protein (Accession Number: NM\_052814). Purification method: Antigen affinity purified.

## Formulation

PBS with 0.1% sodium azide and 50% glycerol pH 7.3.

## Storage

Store at -20°C. DO NOT ALIQUOT

## Clonality

Polyclonal

## Ig Type

Rabbit IgG

## Applications

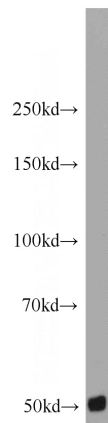
ELISA, WB

## Dilutions

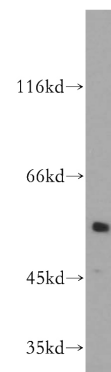
Recommended Dilution:

WB: 1:200-1:2000

## Validations



PC-3 cells were subjected to SDS PAGE followed by western blot with Catalog No:108858(CARD9



antibody) at dilution of 1:500

HL-60 cells were subjected to SDS PAGE followed by western blot with Catalog No:108858(CARD9 antibody) at dilution of 1:300