

RTF1 antibody

Catalog Number: 114858

Product name

RTF1 antibody

IP: 1:200-1:2000

IHC: 1:20-1:200

Specificity

Human, Mouse, Rat; other species not tested.

Antibody description

RTF1 Rabbit Polyclonal antibody. Positive IHC detected in human prostate cancer tissue. Positive WB detected in HeLa cells, HEK-293 cells, MCF7 cells. Positive IP detected in HeLa cells. Observed molecular weight by Western-blot: 100 kDa

Preparation

This antibody was obtained by immunization of RTF1 recombinant protein (Accession Number: BC015052). Purification method: Antigen affinity purified.

Formulation

PBS with 0.02% sodium azide and 50% glycerol pH 7.3.

Storage

Store at -20°C. DO NOT ALIQUOT

Clonality

Polyclonal

Ig Type

Rabbit IgG

Applications

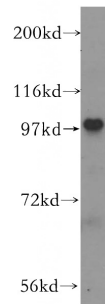
ELISA, WB, IHC, IP

Dilutions

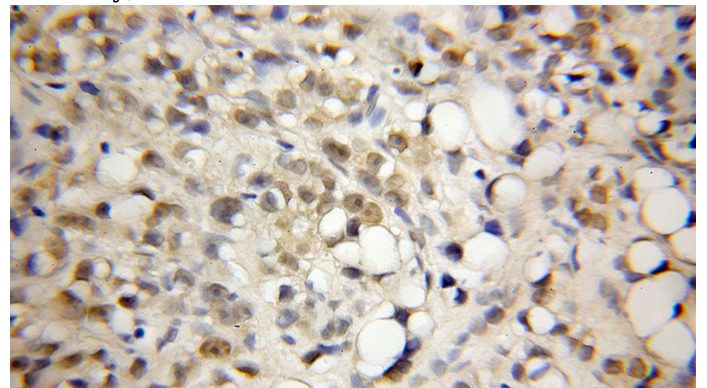
Recommended Dilution:

WB: 1:200-1:2000

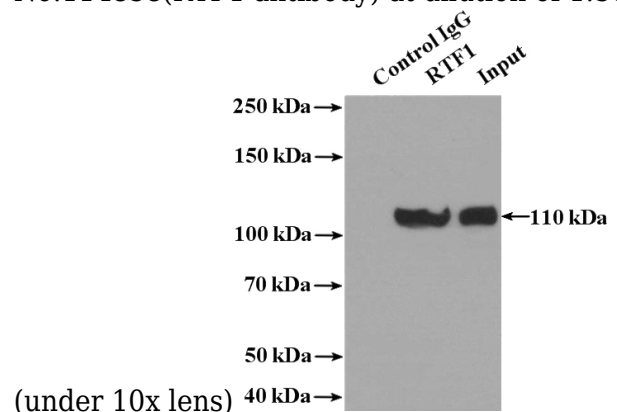
Validations



HeLa cells were subjected to SDS PAGE followed by western blot with Catalog No:114858(RTF1 antibody) at dilution of 1:300



Immunohistochemical of paraffin-embedded human prostate cancer using Catalog No:114858(RTF1 antibody) at dilution of 1:50



IP Result of anti-RTF1 (IP:Catalog No:114858, 4ug; Detection:Catalog No:114858 1:500) with

RTF1 antibody



Catalog Number: 114858

HeLa cells lysate 2400ug.