

# PKM antibody



Catalog Number: 113858

## Product name

Polyclonal

PKM antibody

## Ig Type

## Specificity

Rabbit IgG

Human; other species not tested.

## Applications

## Antibody description

ELISA, WB

PKM Rabbit Polyclonal antibody. Positive WB detected in HeLa cells, COLO 320 cells, HEK-293 cells, MCF-7 cells, SMMC-7721 cells. Observed molecular weight by Western-blot: 55 kDa

## Dilutions

Recommended Dilution:

WB: 1:500-1:5000

## Preparation

This antibody was obtained by immunization of PKM recombinant protein (Accession Number: NM\_002654). Purification method: Antigen affinity purified.

## Validations

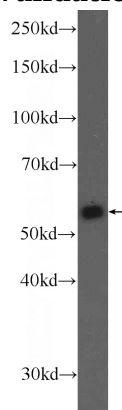
## Formulation

PBS with 0.1% sodium azide and 50% glycerol pH 7.3.

## Storage

Store at -20°C. DO NOT ALIQUOT

## Clonality



HeLa cells were subjected to SDS PAGE followed by western blot with Catalog No:113858(PKM Antibody) at dilution of 1:1000