

# MRPS35 antibody

Catalog Number: 112858

## Product name

MRPS35 antibody

IP: 1:500-1:5000

IF: 1:10-1:100

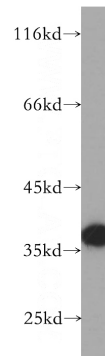
## Specificity

Human, Mouse, Rat; other species not tested.

## Validations

## Antibody description

MRPS35 Rabbit Polyclonal antibody. Positive WB detected in HeLa cells, human heart tissue. Positive IP detected in HeLa cells. Positive IF detected in HepG2 cells. Observed molecular weight by Western-blot: 37 kDa



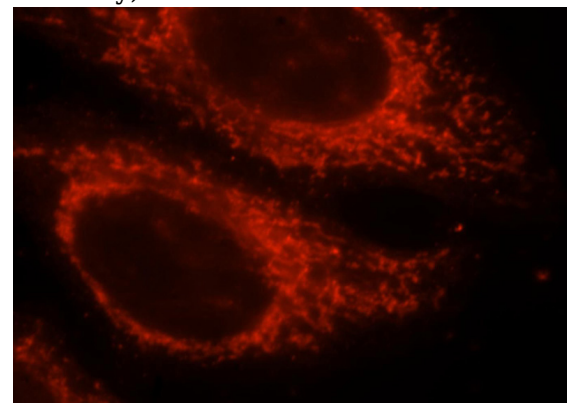
## Preparation

This antibody was obtained by immunization of MRPS35 recombinant protein (Accession Number: NM\_021821). Purification method: Antigen affinity purified.

HeLa cells were subjected to SDS PAGE followed by western blot with Catalog No:112858(MRPS35 antibody) at dilution of 1:2000

## Formulation

PBS with 0.02% sodium azide and 50% glycerol pH 7.3.



## Storage

Store at -20°C. DO NOT ALIQUOT

## Clonality

Polyclonal

## Ig Type

Rabbit IgG

## Applications

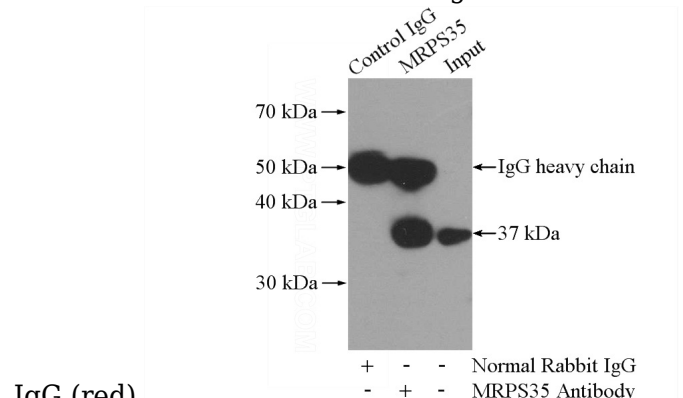
ELISA, WB, IF, IP

## Dilutions

Recommended Dilution:

WB: 1:500-1:5000

Immunofluorescent analysis of HepG2 cells, using MRPS35 antibody Catalog No:112858 at 1:25 dilution and Rhodamine-labeled goat anti-rabbit



IgG (red).

IP Result of anti-MRPS35 (IP:Catalog No:112858,

# MRPS35 antibody



Catalog Number: 112858

---

4ug; Detection:Catalog No:112858 1:1000) with HeLa cells lysate 1200ug.