

# Human CD300E/CMRF35-A5 (Fc Tag) recombinant protein



Catalog Number: 501858

## General Information

### Gene Name Synonym

CD300 antigen-like family member E; CMRF35-A5; Immune receptor expressed on myeloid cells 2; Polymeric immunoglobulin receptor 2

### Protein Construction

A DNA sequence encoding the human CD300E (AAI00889.1) (Met1-His173) was expressed with the Fc region of human IgG1 at the C-terminus.

### Organism

Human

### Expression Host

Human Cells

## QC Testing

### Purity

> (71.4+19.0) % as determined by SDS-PAGE.

### Endotoxin

<1.0 EU per µg protein as determined by the LAL method.

### Stability

Samples are stable for up to twelve months from date of receipt at -70°C

### Predicted N terminal

Leu 18

### Molecular Mass

The recombinant human CD300E consists 394 amino acids and predicts a molecular mass of 44.3 kDa.

### Formulation

Lyophilized from sterile PBS, pH 7.4.

1. 5 % trehalose and mannitol are added as protectants before lyophilization.
2. Please contact us for any concerns or special requirements.

## Usage Guide

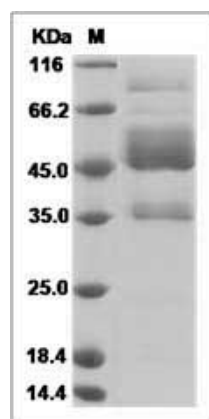
### Storage

Store it under sterile conditions at -20°C to -80°C. It is recommended that the protein be aliquoted for optimal storage. Avoid repeated freeze-thaw cycles.

### Reconstitution

Adding sterile water, prepare a stock solution of 0.25 mg/ml. Concentration is measured by UV-Vis.

### SDS-PAGE



Human CD300E / IREM-2 Protein (Fc Tag) SDS-PAGE