

Gamma cystathionase antibody



Catalog Number: 110858

Product name

Gamma cystathionase antibody

Specificity

Human, Mouse, Rat; other species not tested.

Antibody description

Gamma cystathionase Rabbit Polyclonal antibody. Positive IP detected in HEK-293 cells. Positive WB detected in mouse liver tissue, HepG2 cells, mouse heart tissue, rat heart tissue, rat liver tissue. Positive FC detected in MCF-7 cells. Positive IHC detected in human breast cancer tissue, human kidney tissue. Observed molecular weight by Western-blot: 43-45 kDa, 66-70 kDa

Preparation

This antibody was obtained by immunization of Gamma cystathionase recombinant protein (Accession Number: NM_001902). Purification method: Antigen affinity purified.

Formulation

PBS with 0.1% sodium azide and 50% glycerol pH 7.3.

Storage

Store at -20°C. DO NOT ALIQUOT

Clonality

Polyclonal

Ig Type

Rabbit IgG

Applications

ELISA, IHC, IP, WB, FC

Dilutions

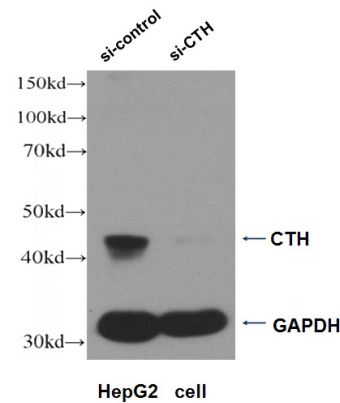
Recommended Dilution:

WB: 1:500-1:5000

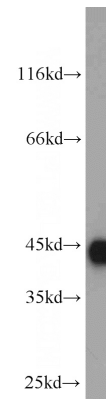
IP: 1:500-1:5000

IHC: 1:20-1:200

Validations

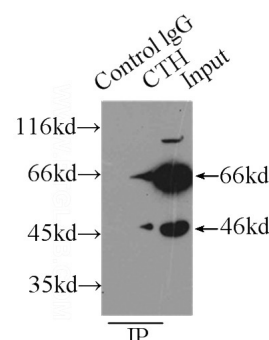


WB result of CTH antibody (Catalog No:110858, 1:500) with si-control and si-CTH transfected



HepG2 cell.

mouse liver tissue were subjected to SDS PAGE followed by western blot with Catalog No:110858(CSE antibody) at dilution of 1:1000

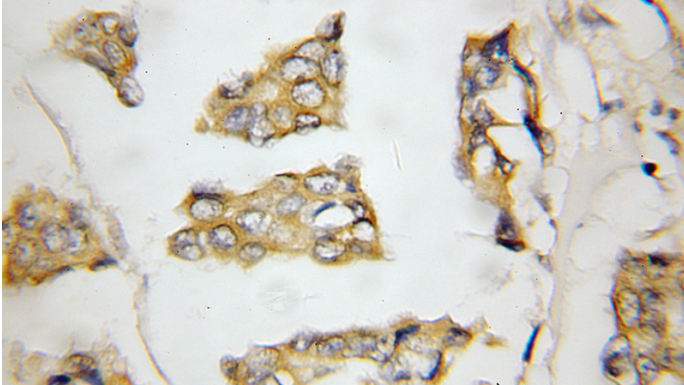


Gamma cystathionase antibody

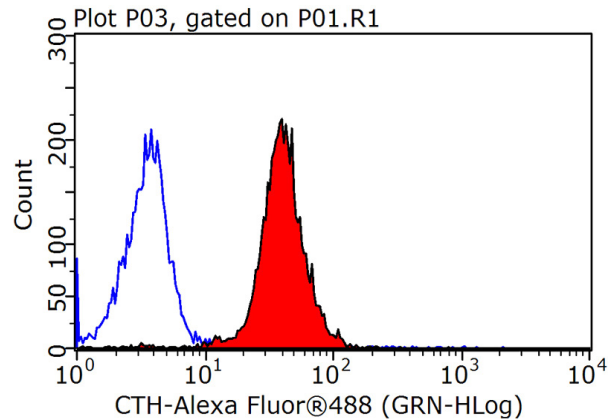


Catalog Number: 110858

IP Result of anti-CSE (IP:Catalog No:110858, 3ug;
Detection:Catalog No:110858 1:1000) with
HEK-293 cells lysate 2700ug.



Immunohistochemical of paraffin-embedded
human breast cancer using Catalog
No:110858(CSE antibody) at dilution of 1:50
(under 10x lens)



1X10⁶ MCF-7 cells were stained with 0.2ug CSE
antibody (Catalog No:110858, red) and control
antibody (blue). Fixed with 90% MeOH blocked
with 3% BSA (30 min). Alexa Fluor 488-
conjugated AffiniPure Goat Anti-Rabbit IgG(H+L)
with dilution 1:1500.