

# COPG antibody

Catalog Number: 109458

## Product name

COPG antibody

## Specificity

Human, Mouse, Rat; other species not tested.

## Antibody description

COPG Rabbit Polyclonal antibody. Positive WB detected in K-562 cells, A375 cells, HeLa cells, human brain tissue, human colon tissue, NIH/3T3 cells. Positive IP detected in K-562 cells. Positive IF detected in HepG2 cells, Hela cells. Positive IHC detected in human breast cancer tissue. Observed molecular weight by Western-blot: 98 kDa

## Preparation

This antibody was obtained by immunization of COPG recombinant protein (Accession Number: BC020498). Purification method: Antigen affinity purified.

## Formulation

PBS with 0.1% sodium azide and 50% glycerol pH 7.3.

## Storage

Store at -20°C. DO NOT ALIQUOT

## Clonality

Polyclonal

## Ig Type

Rabbit IgG

## Applications

ELISA, WB, IHC, IF, IP

## Dilutions

Recommended Dilution:

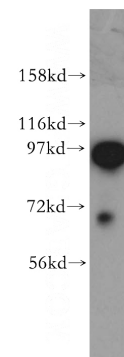
WB: 1:1000-1:10000

IP: 1:1000-1:10000

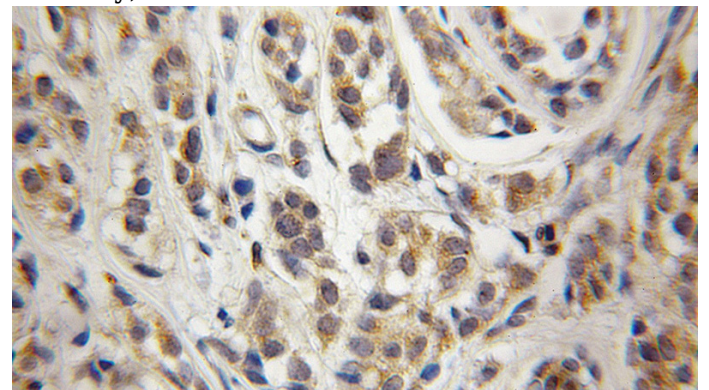
IHC: 1:20-1:200

IF: 1:10-1:100

## Validations



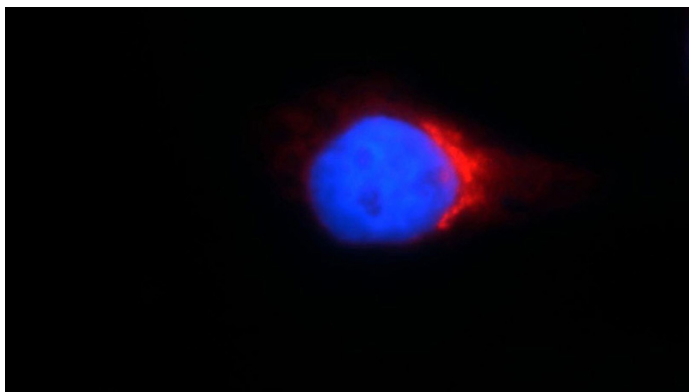
K-562 cells were subjected to SDS PAGE followed by western blot with Catalog No:109458(COPG antibody) at dilution of 1:500



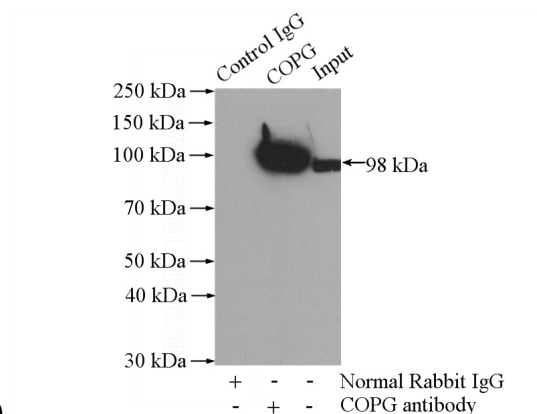
Immunohistochemical of paraffin-embedded human breast cancer using Catalog No:109458(COPG antibody) at dilution of 1:50 (under 10x lens)

# COPG antibody

Catalog Number: 109458



Immunofluorescent analysis of HepG2 cells, using COPG antibody Catalog No:109458 at 1:25 dilution and Rhodamine-labeled goat anti-rabbit IgG (red). Blue pseudocolor = DAPI (fluorescent



DNA dye).

IP Result of anti-COPG (IP:Catalog No:109458, 4ug; Detection:Catalog No:109458 1:2000) with K-562 cells lysate 3600ug.