

Anti-PP2A alpha + beta (2G2) Mouse antibody



Catalog Number: 168458

Product name

WB, IP

Anti-PP2A alpha + beta (2G2) Mouse antibody

Dilutions

Specificity

WB: 1/2000

Human, Mouse, Rat

Antibody description

PP2A alpha + beta (2G2) Mouse monoclonal antibody

Preparation

Antigen: Purified recombinant human full length PP2A beta protein expressed in E.coli

Formulation

Purified mouse monoclonal in buffer containing 0.1M Tris-Glycine (pH 7.4 150 mM NaCl) with 0.02% sodium azide 50% glycerol.

Storage

Store at 4°C short term. Store at -20°C long term. Avoid freeze / thaw cycle.

Clonality

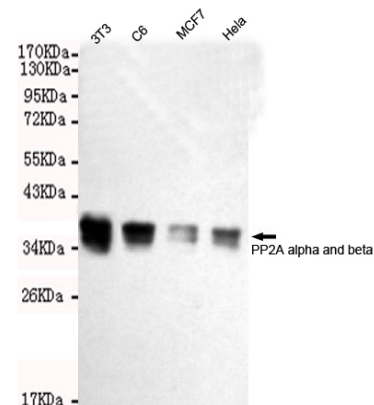
Monoclonal

Ig Type

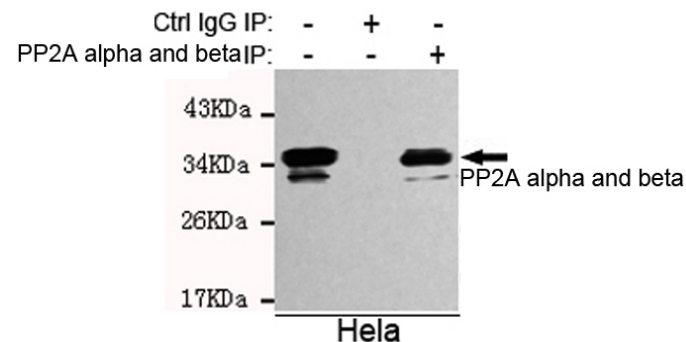
Mouse IgG2a

Applications

Validations



Western blot detection of PP2A alpha and beta in HeLa, MCF7, C6 and 3T3 cell lysates using PP2A alpha and beta mouse mAb (1:2000 diluted). Predicted band size: 36KDa. Observed band size: 36KDa.



Immunoprecipitation analysis of HeLa cell lysates using PP2A alpha and beta mouse mAb.