

# Anti-Phospho-GSK3 beta (Ser9) Rabbit antibody



Catalog Number: 167458

## Product name

Anti-Phospho-GSK3 beta (Ser9) Rabbit antibody

## Ig Type

Rabbit IgG

## Specificity

Human, Mouse, Rat

## Applications

ICC/IF, WB, IHC-P, IP, ELISA

## Antibody description

Phospho-GSK3 beta (Ser9) Rabbit polyclonal antibody

## Dilutions

IF: 1/50-200

WB: 1/500 - 1/2000

IHC: 1/100 - 1/300

ELISA: 1/5000

## Preparation

Antigen: The antiserum was produced against synthesized peptide derived from human GSK3 beta around the phosphorylation site of Ser9. AA range:1-50

## Formulation

Liquid in PBS containing 50% glycerol, 0.5% BSA and 0.02% sodium azide.

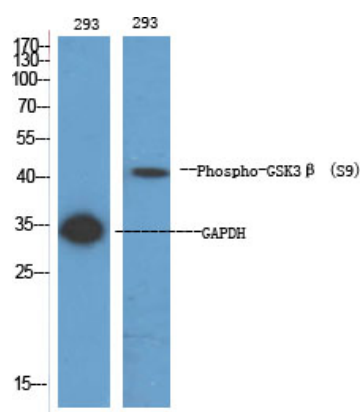
## Storage

Store at 4°C short term. Store at -20°C long term. Avoid freeze / thaw cycle.

## Clonality

Polyclonal

## Validations



Western Blot analysis of various cells using Phospho-GSK3u03b2 (S9) Polyclonal Antibody