

RAB7A antibody

Catalog Number: 114458

Product name

RAB7A antibody

IP: 1:200-1:1000

IHC: 1:20-1:200

Specificity

Human, Mouse, Rat; other species not tested.

Antibody description

RAB7A Rabbit Polyclonal antibody. Positive IHC detected in human stomach tissue, human skeletal muscle tissue. Positive IP detected in SH-SY5Y cells. Positive WB detected in SH-SY5Y cells, A431 cells, C6 cells, mouse brain tissue, NIH/3T3 cells. Observed molecular weight by Western-blot: 23 kDa

Preparation

This antibody was obtained by immunization of Peptide (Accession Number: NM_004637). Purification method: Antigen affinity purified.

Formulation

PBS with 0.02% sodium azide and 50% glycerol pH 7.3.

Storage

Store at -20°C. DO NOT ALIQUOT

Clonality

Polyclonal

Ig Type

Rabbit IgG

Applications

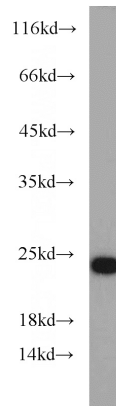
ELISA, WB, IHC, IP

Dilutions

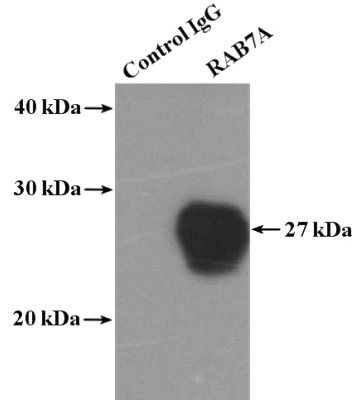
Recommended Dilution:

WB: 1:200-1:2000

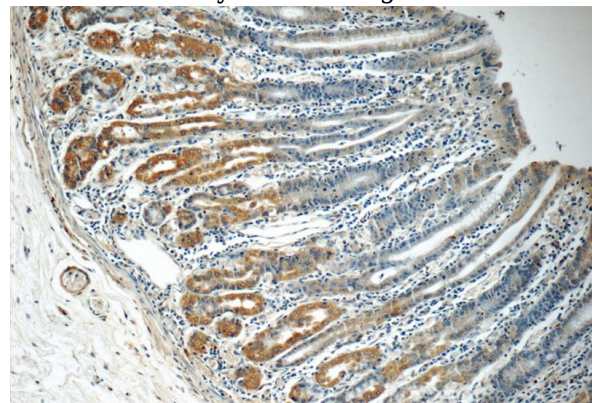
Validations



SH-SY5Y cells were subjected to SDS PAGE followed by western blot with Catalog No:114458(RAB7A antibody) at dilution of 1:800



IP Result of anti-RAB7A (IP:Catalog No:114458, 4ug; Detection:Catalog No:114458 1:300) with SH-SY5Y cells lysate 1600ug.

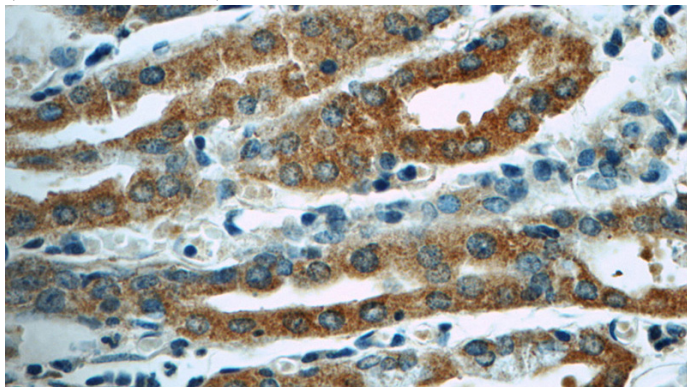


Immunohistochemistry of paraffin-embedded human stomach tissue slide using Catalog

RAB7A antibody

Catalog Number: 114458

No:114458(RAB7A Antibody) at dilution of 1:50
(under 10x lens)



Immunohistochemistry of paraffin-embedded
human stomach tissue slide using Catalog
No:114458(RAB7A Antibody) at dilution of 1:50
(under 40x lens)