

# Mouse KIRREL3/NEPH2 (His Tag) recombinant protein



Catalog Number: 502458

## General Information

### Gene Name Synonym

Kin of irregular chiasm-like protein 3; Processed kin of IRRE-like protein 3

### Protein Construction

A DNA sequence encoding the mouse KIRREL3 (Q8BR86-1) extracellular domain (Met 1-Ala 535) was expressed, with a C-terminal polyhistidine tag.

### Organism

Mouse

### Expression Host

Human Cells

## QC Testing

### Activity

Measured by the ability of the immobilized protein to support the adhesion of MS1 mouse pancreatic islet endothelial cells.

When cells are added to mouse KIRREL3 coated plates (15 µg/mL, 100 µL/well), > 40% will adhere specifically after 90 minutes at 37 °C.

### Purity

> 96 % as determined by SDS-PAGE

### Endotoxin

< 1.0 EU per µg of the protein as determined by the LAL method

### Stability

Samples are stable for up to twelve months from date of receipt at -70°C

### Predicted N terminal

Leu 22

## Molecular Mass

The secreted recombinant mouse KIRREL3 consists of 525 amino acids (pro form) and has a calculated molecular mass of 57.5 kDa. The apparent molecular mass of the recombinant mouse KIRREL3 is approximately 65 kDa in SDS-PAGE under reducing conditions.

## Formulation

Lyophilized from sterile PBS, pH 7.4

1. 5 % trehalose and mannitol are added as protectants before lyophilization.
2. Please contact us for any concerns or special requirements.

## Usage Guide

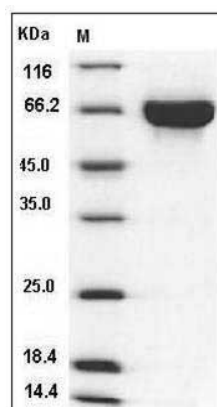
### Storage

Store it under sterile conditions at -20°C to -80°C. It is recommended that the protein be aliquoted for optimal storage. Avoid repeated freeze-thaw cycles.

### Reconstitution

Adding sterile water, prepare a stock solution of 0.25 mg/ml. Concentration is measured by UV-Vis.

### SDS-PAGE



Mouse KIRREL3 / NEPH2 Protein (His Tag) SDS-PAGE