

# Anti-Alpha Skeletal Muscle Actin (2B10) Mouse antibody



Catalog Number: 169058

## Product name

Anti-Alpha Skeletal Muscle Actin (2B10) Mouse antibody

## Specificity

Human, Mouse, Rat

## Antibody description

Alpha Skeletal Muscle Actin (2B10) Mouse monoclonal antibody

## Preparation

Antigen: Synthetic Peptide of  $\alpha$  skeletal muscle actin

## Formulation

PBS, pH 7.4, containing 0.02% sodium azide as Preservative and 50% Glycerol.

## Storage

Store at 4°C short term. Store at -20°C long term. Avoid freeze / thaw cycle.

## Clonality

Monoclonal

## Ig Type

Mouse IgG

## Applications

WB, IHC-P, ICC/IF, IP

## Dilutions

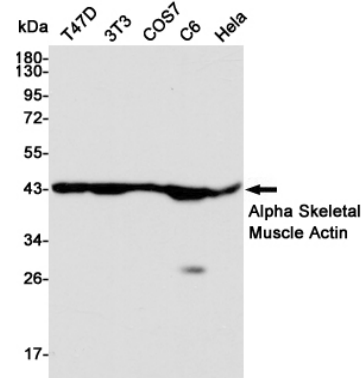
WB: 1/500-10000

IP: 1/200

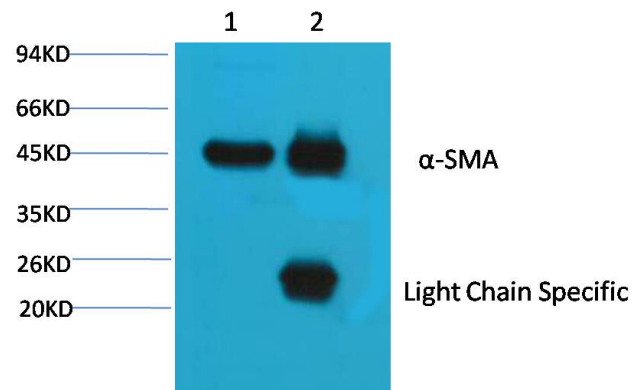
IF: 1/200

IHC: 1/50-300

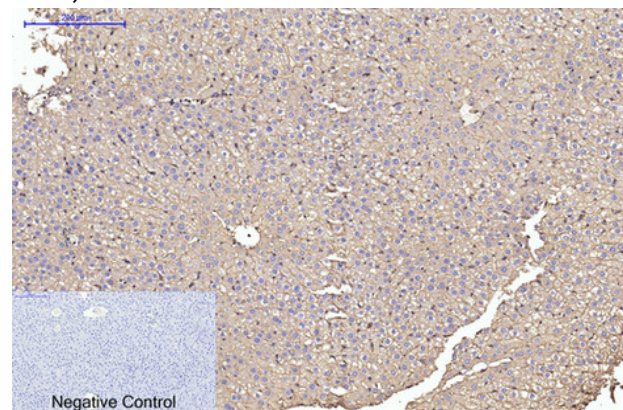
## Validations



Western blot detection of Alpha Skeletal Muscle Actin in T47D, 3T3, COS7, C6 and HeLa cell lysates using Alpha Skeletal Muscle Actin mouse mAb (1:10000 diluted). Predicted band size: 42 kDa. Observed band size: 42 kDa.



Western blot analysis of 1) HeLa, 2) Mouse Brain tissue, 3) Rat Brain tissue with diluted at 1:20,000.



Immunohistochemical analysis of paraffin-embedded Rat-liver tissue. 1,  $\alpha$  skeletal muscle actin Monoclonal Antibody was diluted at

# Anti-Alpha Skeletal Muscle Actin (2B10) Mouse antibody



Catalog Number: 169058

---

1:200(4°C,overnight). 2, Sodium citrate pH 6.0  
was used for antibody retrieval(>98°C,20min).  
3,Secondary antibody was diluted at 1:200(room

tempeRature, 30min). Negative control was used  
by secondary antibody only.