

PON1 antibody



Catalog Number: 114058

Product name

PON1 antibody

Recommended Dilution:

WB: 1:200-1:2000

Immunogen

IP: 1:200-1:2000

[Human PON1 Recombinant protein \(His tag\)](#)

IHC: 1:20-1:200

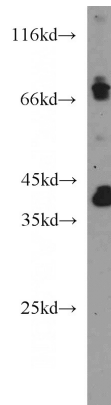
Specificity

Human, Mouse, Rat; other species not tested.

Validations

Antibody description

PON1 Rabbit Polyclonal antibody. Positive IHC detected in human liver tissue. Positive WB detected in mouse liver tissue, human blood tissue. Positive IP detected in mouse liver tissue. Observed molecular weight by Western-blot: 42-45 kDa



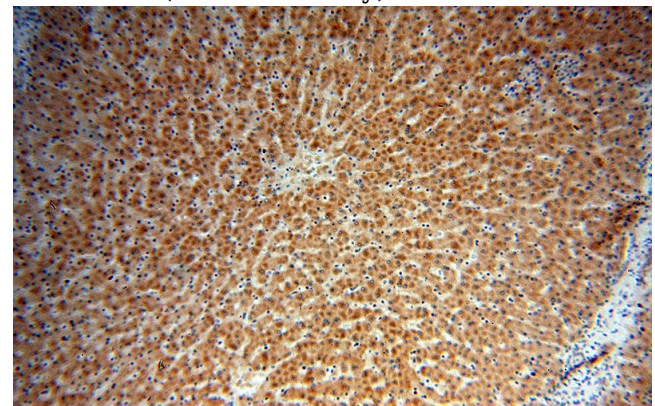
Preparation

This antibody was obtained by immunization of PON1 recombinant protein (Accession Number: NM_000446). Purification method: Antigen affinity purified.

mouse liver tissue were subjected to SDS PAGE followed by western blot with Catalog No:114058(PON1 antibody) at dilution of 1:500

Formulation

PBS with 0.02% sodium azide and 50% glycerol pH 7.3.



Storage

Store at -20°C. DO NOT ALIQUOT

Clonality

Polyclonal

Immunohistochemical of paraffin-embedded human liver using Catalog No:114058(PON1 antibody) at dilution of 1:50 (under 10x lens)

Ig Type

Rabbit IgG

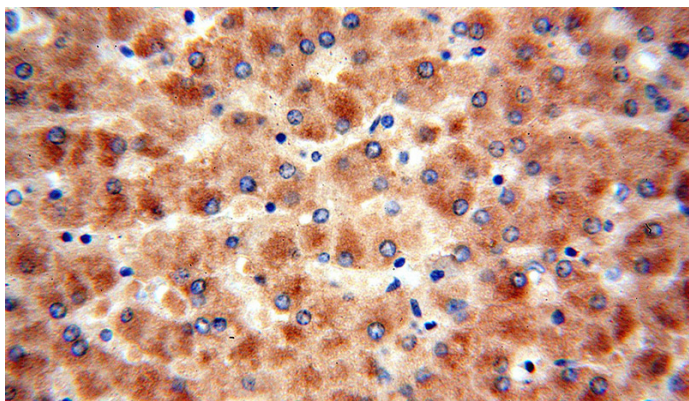
Applications

ELISA, WB, IHC, IP

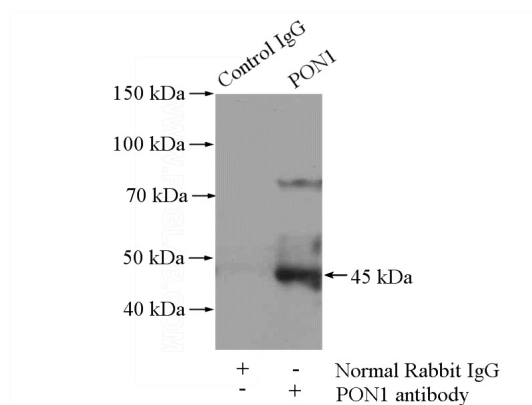
Dilutions

PON1 antibody

Catalog Number: 114058



Immunohistochemical of paraffin-embedded human liver using Catalog No:114058(PON1 antibody) at dilution of 1:50 (under 40x lens)



IP Result of anti-PON1 (IP:Catalog No:114058, 4ug; Detection:Catalog No:114058 1:500) with mouse liver tissue lysate 4000ug.