

# Anti-LILRB3 antibody



Catalog Number: 102058

## Product name

Anti-LILRB3 antibody

## Immunogen

[Human LILRB3 \(His Tag\) recombinant protein](#)

## Specificity

Human LILRB3

## Antibody description

Mouse monoclonal to LILRB3

## Preparation

This antibody was produced from a hybridoma resulting from the fusion of a mouse myeloma with B cells obtained from a mouse immunized with purified, recombinant Human LILRB3 (rh LILRB3; NP\_006855.2; Met 1-Glu 443) and conjugated with FITC under optimum conditions, the unreacted FITC was removed.

## Formulation

Aqueous solution containing 0.5% BSA and 0.09% sodium azide

## Storage

This antibody is stable for 12 months from date of receipt when stored at 2°C-8°C. Protected from prolonged exposure to light. Do not freeze ! Sodium azide is toxic to cells and should be disposed of properly. Flush with large volumes of water during disposal.

## Clonality

Monoclonal

## Ig Type

Mouse IgG1

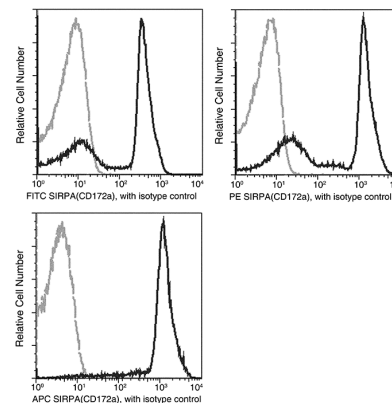
## Applications

FCM

## Dilutions

FCM

## Validations



LILRB3 Antibody (FITC), Mouse MAb, Flow cytometric analysis

Flow cytometric analysis of Human LILRB3(CD85a) expression on human whole blood monocytes (left panel) and granulocytes (right panel). Cells were stained with FITC conjugated anti-Human LILRB3(CD85a). The histograms were derived from gated events with the forward and side light-scatter characteristics of viable monocytes and granulocytes.