

GPATCH4 antibody

Catalog Number: 111058

Product name

GPATCH4 antibody

IHC: 1:20-1:200

IF: 1:20-1:200

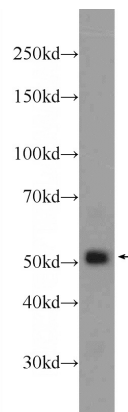
Specificity

Human, Mouse, Rat; other species not tested.

Antibody description

GPATCH4 Rabbit Polyclonal antibody. Positive IHC detected in human liver tissue, human liver cancer tissue. Positive IF detected in HEK-293 cells. Positive WB detected in HEK-293 cells, mouse kidney tissue, rat kidney tissue. Observed molecular weight by Western-blot: 51 kDa

Validations



Preparation

This antibody was obtained by immunization of GPATCH4 recombinant protein (Accession Number: BC040147). Purification method: Antigen affinity purified.

HEK-293 cells were subjected to SDS PAGE followed by western blot with Catalog No:111058(GPATCH4 Antibody) at dilution of 1:1000

Formulation

PBS with 0.1% sodium azide and 50% glycerol pH 7.3.

Storage

Store at -20°C. DO NOT ALIQUOT

Clonality

Polyclonal

Ig Type

Rabbit IgG

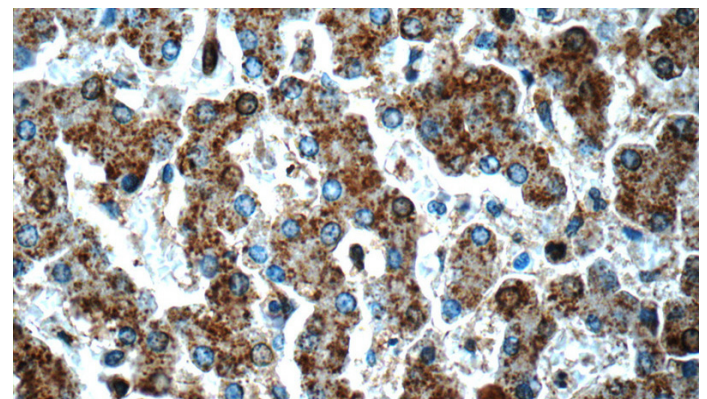
Applications

ELISA, WB, IHC, IF

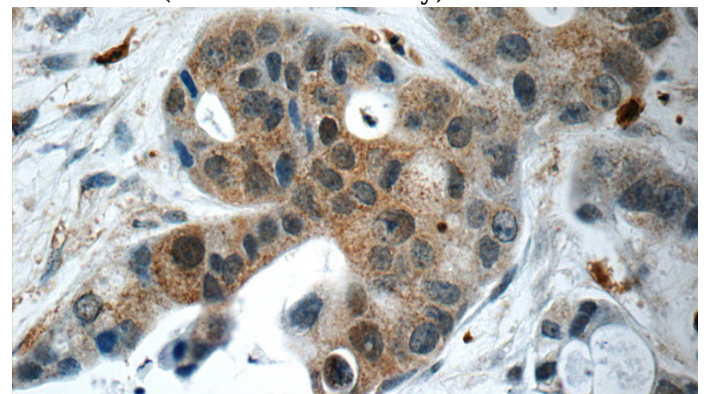
Dilutions

Recommended Dilution:

WB: 1:500-1:5000



Immunohistochemistry of paraffin-embedded human liver slide using Catalog No:111058(GPATCH4 Antibody) at dilution of 1:50

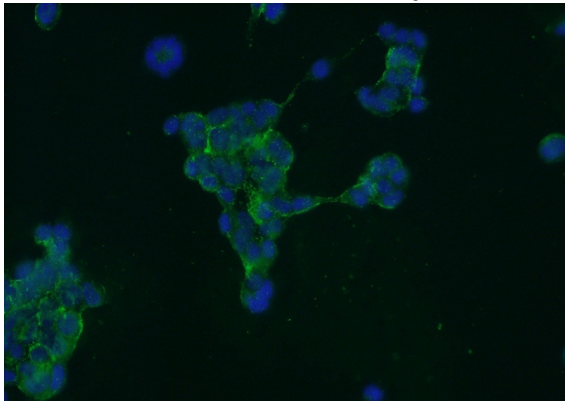


Immunohistochemistry of paraffin-embedded

GPATCH4 antibody

Catalog Number: 111058

human liver cancer slide using Catalog No:111058(GPATCH4 Antibody) at dilution of 1:50



Immunofluorescent analysis of HEK-293 cells using Catalog No:111058(GPATCH4 Antibody) at dilution of 1:50 and Alexa Fluor 488-conjugated AffiniPure Goat Anti-Rabbit IgG(H+L)