

# domain-I-of-FIZ-1 antibody



Catalog Number: 110058

## Product name

domain-I-of-FIZ-1 antibody

IHC: 1:20-1:200

IF: 1:10-1:100

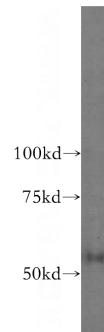
## Specificity

Human, Mouse, Rat; other species not tested.

## Validations

## Antibody description

domain-I-of-FIZ-1 Rabbit Polyclonal antibody. Positive WB detected in human kidney tissue, Y79 cells. Positive IHC detected in human kidney tissue, human skeletal muscle tissue. Positive IF detected in HepG2 cells. Observed molecular weight by Western-blot: 60 kDa



## Preparation

This antibody was obtained by immunization of Peptide (Accession Number: NM\_032836). Purification method: Antigen affinity purified.

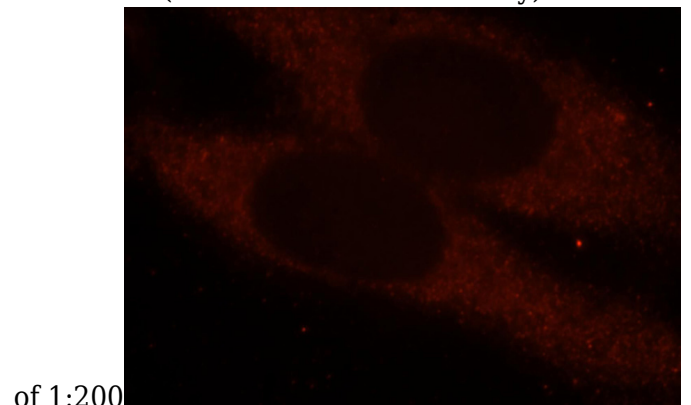
human kidney tissue were subjected to SDS PAGE followed by western blot with Catalog No:110058(domain-I-of-FIZ-1 antibody) at dilution

## Formulation

PBS with 0.02% sodium azide and 50% glycerol pH 7.3.

## Storage

Store at -20°C. DO NOT ALIQUOT



## Clonality

Polyclonal

## Ig Type

Rabbit IgG

## Applications

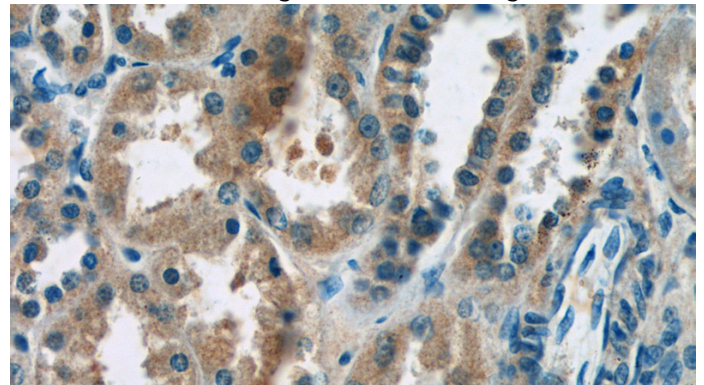
ELISA, WB, IF, IHC

## Dilutions

Recommended Dilution:

WB: 1:200-1:2000

of 1:200  
Immunofluorescent analysis of HepG2 cells, using FIZ1 antibody Catalog No: at 1:25 dilution and Rhodamine-labeled goat anti-rabbit IgG (red).



Immunohistochemistry of paraffin-embedded human kidney tissue slide using Catalog

# domain-I-of-FIZ-1 antibody



Catalog Number: 110058

---

No:110058(domain-I-of-FIZ-1 Antibody) at dilution of 1:50 (under 40x lens)