

Anti-Alkaline Phosphatase Rabbit antibody



Catalog Number: 166748

Product name

Anti-Alkaline Phosphatase Rabbit antibody

Specificity

Human, Mouse, Rat

Antibody description

Alkaline Phosphatase Rabbit polyclonal antibody

Preparation

Antigen: A synthesized peptide derived from human Alkaline Phosphatase

Formulation

Rabbit IgG in phosphate buffered saline , pH 7.4, 150mM NaCl, 0.02% sodium azide and 50% glycerol.

Storage

Store at 4°C short term. Store at -20°C long term. Avoid freeze / thaw cycle.

Clonality

Polyclonal

Ig Type

Rabbit IgG

Applications

WB, IHC-P, ICC/IF, IP, FC

Dilutions

WB: 1/5000-1/10000

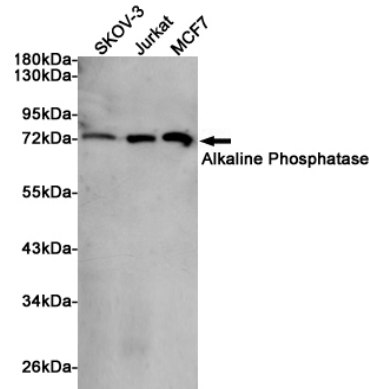
IHC: 1/50-1/200

ICC/IF: 1/50-1/100

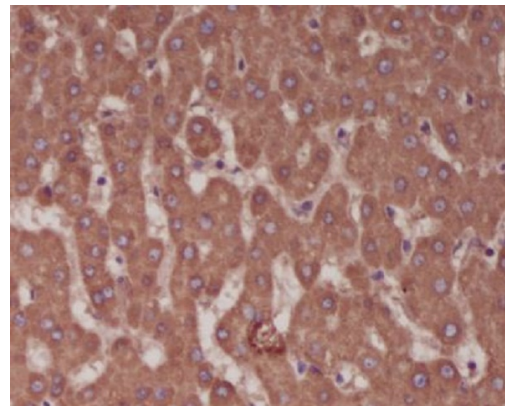
IP: 1/50

FC: 1/50

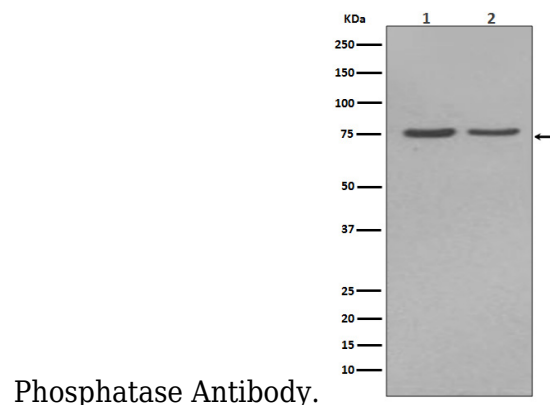
Validations



Western blot analysis of extracts from SKOV-3, Jurkat and MCF7 cells using Alkaline Phosphatase Rabbit pAb at 1:1000 dilution. Predicted band size: 57kDa. Observed band size: 70kDa.

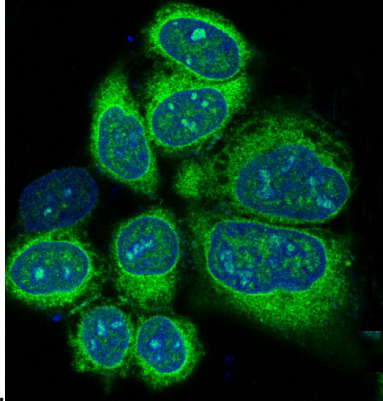


Immunohistochemical analysis of paraffin-embedded human liver, using Alkaline



Phosphatase Antibody.

Western blot analysis of Alkaline Phosphatase expression in (1)HepG2 cell lysate; (2)JAR cell



Immunofluorescent analysis of HeLa cells, using Alkaline Phosphatase Antibody .

lysate.