

Rhesus EphA4/Eph Receptor A4 (His Tag) recombinant protein



Catalog Number: 504748

General Information

Protein Construction

A DNA sequence encoding the rhesus EPHA4 (NP_001247799.1) (Met1-Thr547) was expressed with a polyhistidine tag at the C-terminus.

Organism

Rhesus

Expression Host

Human Cells

QC Testing

Activity

Measured by its binding ability in a functional ELISA.

Immobilized Rhesus EPHA4-His at 10 µg/ml (100 µl/well) can bind mouse EFNA5-Fc (Cat:502960), The EC₅₀ of mouse EFNA5-Fc (Cat:502960) is 28.2-65.8 ng/ml.

Purity

> 95 % as determined by SDS-PAGE

Endotoxin

< 1.0 EU per µg of the protein as determined by the LAL method

Stability

Samples are stable for up to twelve months from date of receipt at -70°C

Predicted N terminal

Val 20

Molecular Mass

The recombinant rhesus EPHA4 comprises 539 amino acids and has a calculated molecular mass of 59.8 KDa.

Formulation

Lyophilized from sterile PBS, pH 7.4

1. 5 % trehalose and mannitol are added as protectants before lyophilization.

2. Please contact us for any concerns or special requirements.

Usage Guide

Storage

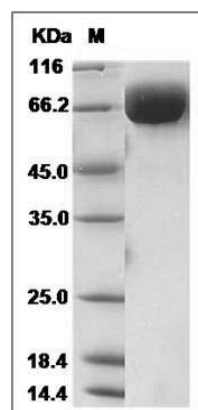
Store it under sterile conditions at -20°C to -80°C.

It is recommended that the protein be aliquoted for optimal storage. Avoid repeated freeze-thaw cycles.

Reconstitution

Adding sterile water, prepare a stock solution of 0.25 mg/ml. Concentration is measured by UV-Vis.

SDS-PAGE



Cynomolgus EphA4 Protein (His Tag) SDS-PAGE