

E2F6 Polyclonal Antibody

Catalog Number: 164748

Product name

E2F6 Polyclonal Antibody

Specificity

Human, Mouse

Antibody description

Polyclonal antibody to E2F6

Preparation

Antigen: Recombinant fusion protein containing a sequence corresponding to amino acids 1-281 of human E2F6 (NP_937987.2).

Formulation

PBS with 0.02% sodium azide, 50% glycerol, pH7.3.

Storage

Store at -20°C. Avoid freeze / thaw cycles.

Clonality

Polyclonal

Ig Type

Rabbit IgG

Applications

WB, IHC, IF, IP, CHIP

Dilutions

WB 1:500 - 1:2000

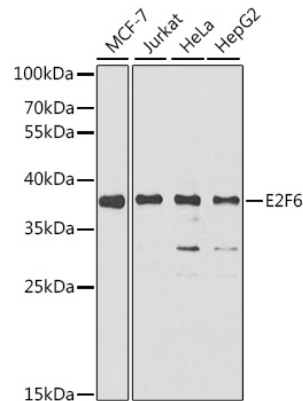
IHC 1:50 - 1:200

IF 1:20 - 1:100

IP 1:50 - 1:100

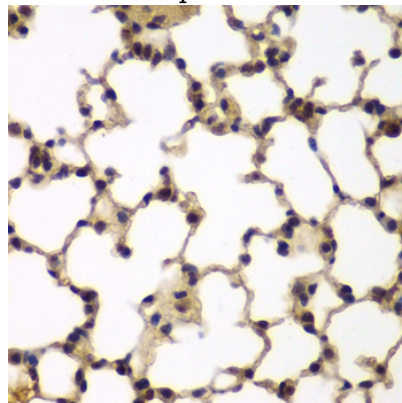
CHIP 1:20 - 1:50

Validations



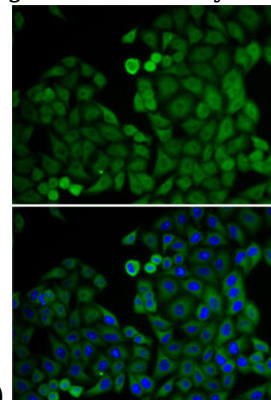
Western blot - E2F6 Polyclonal Antibody

Western blot analysis of extracts of various cell lines, using E2F6 antibody at 1:1000 dilution. Secondary antibody: HRP Goat Anti-Rabbit IgG (H+L) at 1:10000 dilution. Lysates/proteins: 25ug per lane. Blocking buffer: 3% nonfat dry milk in TBST. Detection: ECL Basic Kit. Exposure time: 90s.



Immunohistochemistry - E2F6 Polyclonal Antibody

Immunohistochemistry of paraffin-embedded mouse lung using E2F6 antibody at dilution of



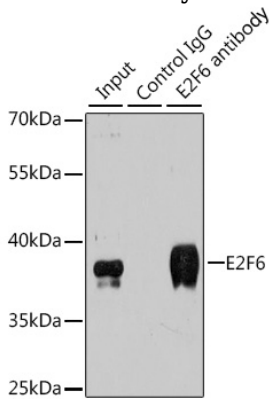
1:200 (40x lens).

E2F6 Polyclonal Antibody

Catalog Number: 164748

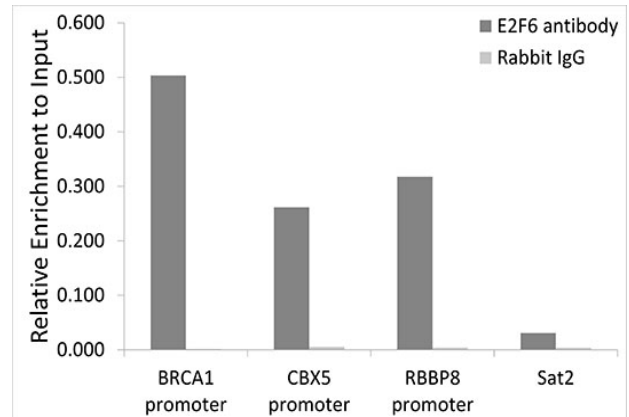
Immunofluorescence - E2F6 Polyclonal Antibody

Immunofluorescence analysis of U2OS cells using E2F6 antibody . Blue: DAPI for nuclear staining.



Immunoprecipitation - E2F6 Polyclonal Antibody

Immunoprecipitation analysis of 200ug extracts of MCF-7 cells using 3ug E2F6 antibody . Western blot was performed from the immunoprecipitate using E2F6 antibody at a dilution of 1:500.



Chromatin Immunoprecipitation - E2F6 Polyclonal Antibody

Chromatin immunoprecipitation analysis of extracts of HeLa cells, using E2F6 antibody and rabbit IgG. The amount of immunoprecipitated DNA was checked by quantitative PCR. Histogram was constructed by the ratios of the immunoprecipitated DNA to the input.