

## General Information

### Gene Name Synonym

Female-lethal(2)D homolog; WT1-associated protein; Wilms tumor 1-associating protein

### Protein Construction

A DNA sequence encoding the human WTAP isoform 2 (Q15007-2) (Met 1-Arg 151) was fused with the GST tag at the N-terminus.

### Organism

Human

### Expression Host

E. coli

## QC Testing

### Purity

> 90 % as determined by SDS-PAGE

### Endotoxin

Please contact us for more information.

### Stability

Samples are stable for up to twelve months from date of receipt at -70°C

### Predicted N terminal

Met

### Molecular Mass

The recombinant human WTAP/GST chimera

consists of 386 amino acids and migrates as an approximately 45 kDa band as predicted in SDS-PAGE under reducing conditions.

### Formulation

Lyophilized from sterile 20mM Tris, 0.15M NaCl, 0.5mM GSH, pH 8.0

1. 5 % trehalose and mannitol are added as protectants before lyophilization.
2. Please contact us for any concerns or special requirements.

## Usage Guide

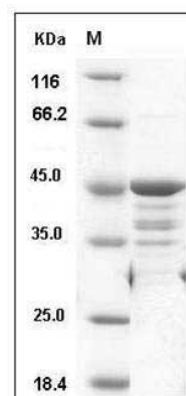
### Storage

Store it under sterile conditions at -20°C to -80°C. It is recommended that the protein be aliquoted for optimal storage. Avoid repeated freeze-thaw cycles.

### Reconstitution

Adding sterile water, prepare a stock solution of 0.25 mg/ml. Concentration is measured by UV-Vis.

### SDS-PAGE



Human WTAP Protein (GST Tag) SDS-PAGE