

ATP2C1 antibody

Catalog Number: 108348

Product name

ATP2C1 antibody

IP: 1:200-1:2000

IF: 1:20-1:200

Specificity

Human, Mouse, Rat; other species not tested.

Antibody description

ATP2C1 Rabbit Polyclonal antibody. Positive IF detected in HeLa cells. Positive WB detected in HeLa cells, A431 cells, human brain tissue. Positive IP detected in mouse kidney tissue. Observed molecular weight by Western-blot: 95-103 kDa

Preparation

This antibody was obtained by immunization of ATP2C1 recombinant protein (Accession Number: NM_001199185). Purification method: Antigen affinity purified.

Formulation

PBS with 0.02% sodium azide and 50% glycerol pH 7.3.

Storage

Store at -20°C. DO NOT ALIQUOT

Clonality

Polyclonal

Ig Type

Rabbit IgG

Applications

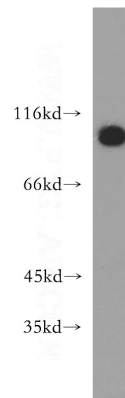
ELISA, WB, IP, IF

Dilutions

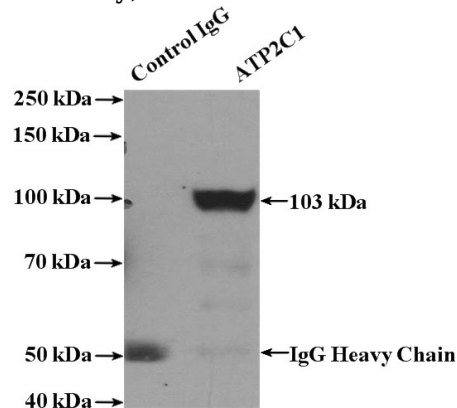
Recommended Dilution:

WB: 1:200-1:2000

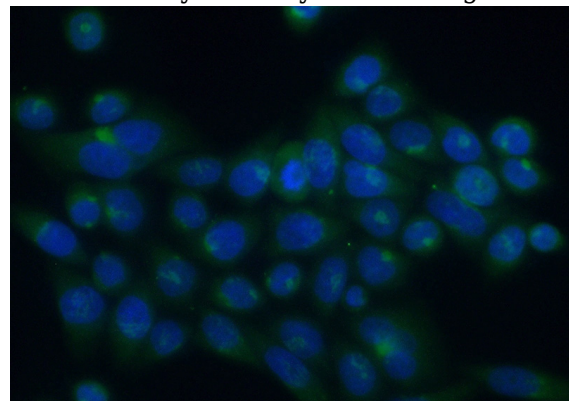
Validations



HeLa cells were subjected to SDS PAGE followed by western blot with Catalog No:108348(ATP2C1 antibody) at dilution of 1:400



IP Result of anti-ATP2C1 (IP:Catalog No:108348, 4ug; Detection:Catalog No:108348 1:500) with mouse kidney tissue lysate 4000ug.



Immunofluorescent analysis of (10% Formaldehyde) fixed HeLa cells using Catalog

ATP2C1 antibody



Catalog Number: 108348

No:108348(ATP2C1 Antibody) at dilution of 1:50

and Alexa Fluor 488-conjugated AffiniPure Goat
Anti-Rabbit IgG(H+L)