

# SLC7A4 antibody



Catalog Number: 115348

## Product name

SLC7A4 antibody

## Specificity

Human; other species not tested.

## Antibody description

SLC7A4 Rabbit Polyclonal antibody. Positive WB detected in human liver tissue. Positive IF detected in Hela cells. Observed molecular weight by Western-blot: 68kd

## Preparation

This antibody was obtained by immunization of SLC7A4 recombinant protein (Accession Number: NM\_004173). Purification method: Antigen affinity purified.

## Formulation

PBS with 0.02% sodium azide and 50% glycerol pH 7.3.

## Storage

Store at -20°C. DO NOT ALIQUOT

## Clonality

Polyclonal

## Ig Type

Rabbit IgG

## Applications

ELISA, WB, IF

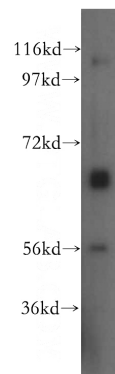
## Dilutions

Recommended Dilution:

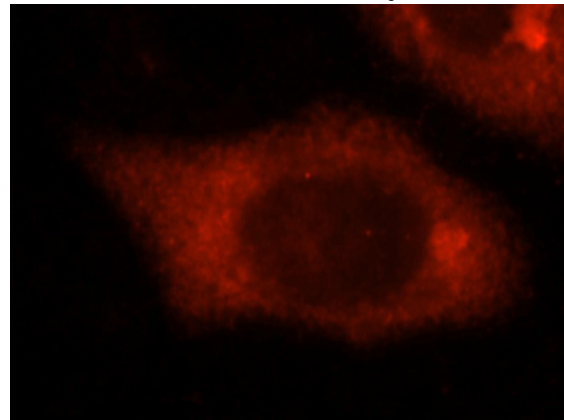
WB: 1:500-1:5000

IF: 1:10-1:100

## Validations



human liver tissue were subjected to SDS PAGE followed by western blot with Catalog No:115348(SLC7A4 antibody) at dilution of 1:500



Immunofluorescent analysis of Hela cells, using SLC7A4 antibody Catalog No:115348 at 1:25 dilution and Rhodamine-labeled goat anti-rabbit IgG (red).