

Anti-Cr11 antibody



Catalog Number: 175348

Product name

Anti-Cr11 antibody

Specificity

Mouse, Rat

Antibody description

Rabbit polyclonal antibody to Cr11

Preparation

This antigen of this antibody was klh conjugated synthetic peptide derived from human crry 51-150/559

Formulation

Liquid, 0.01M TBS(pH7.4) with 1% BSA, 0.03% Proclin300 and 50% Glycerol.

Storage

Store at -20°C for one year. Avoid repeated freeze/thaw cycles. The lyophilized antibody is stable at room temperature for at least one month and for greater than a year when kept at -20°C. When reconstituted in sterile pH 7.4 0.01M PBS or diluent of antibody the antibody is stable for at least two weeks at 2-4°C.

Clonality

Polyclonal

Ig Type

Rabbit IgG

Applications

WB

Dilutions

WB:1:500-2000

Validations

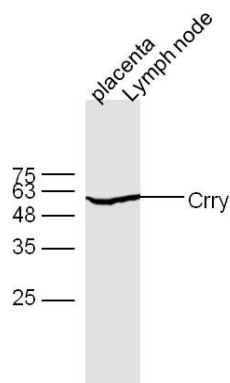
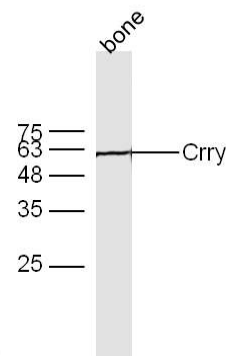


Fig1: Protein:; placenta(mouse) lyates at 40ug; lymph node(mouse) lyates at 40ug;; Primary: Rabbit Anti-Crry at 1:300;; Secondary: 800CW Conjugated Goat (polyclonal) Anti-Rabbit IgG(H+L) at 1: 10000;; Predicted band size:58 kD



Observed band size:58 kD

Fig2: Protein: bone(mouse) lyates at 40ug;; Primary: Rabbit Anti-Crry at 1:300;; Secondary: 800CW Conjugated Goat (polyclonal) Anti-Rabbit IgG(H+L) at 1: 10000;; Predicted band size:58 kD
Observed band size:58 kD