

PWP2 antibody

Catalog Number: 114348

Product name

PWP2 antibody

IP: 1:200-1:2000

IF: 1:10-1:100

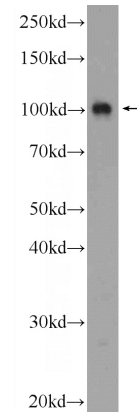
Specificity

Human; other species not tested.

Validations

Antibody description

PWP2 Rabbit Polyclonal antibody. Positive IF detected in HepG2 cells. Positive IP detected in HeLa cells. Positive WB detected in HeLa cells. Observed molecular weight by Western-blot: 102 kDa



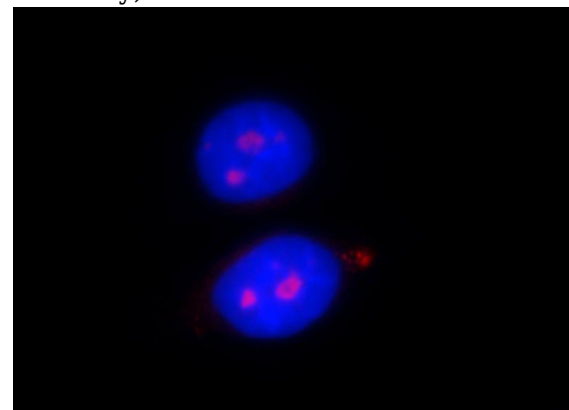
Preparation

This antibody was obtained by immunization of PWP2 recombinant protein (Accession Number: XM_006723910). Purification method: Antigen affinity purified.

HeLa cells were subjected to SDS PAGE followed by western blot with Catalog No:114348(PWP2 Antibody) at dilution of 1:600

Formulation

PBS with 0.1% sodium azide and 50% glycerol pH 7.3.



Storage

Store at -20°C. DO NOT ALIQUOT

Clonality

Polyclonal

Ig Type

Rabbit IgG

Applications

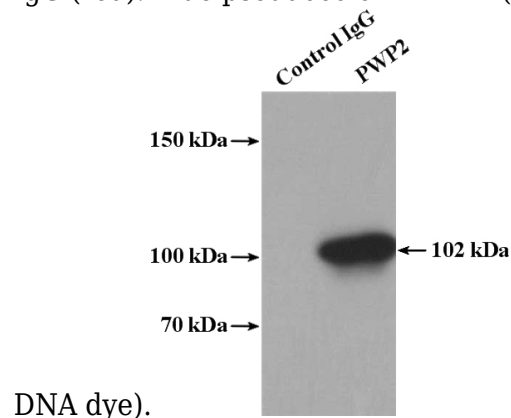
ELISA, IF, WB, IP

Dilutions

Recommended Dilution:

WB: 1:200-1:2000

Immunofluorescent analysis of HepG2 cells, using PWP2 antibody Catalog No:114348 at 1:25 dilution and Rhodamine-labeled goat anti-rabbit IgG (red). Blue pseudocolor = DAPI (fluorescent



PWP2 antibody



Catalog Number: 114348

IP Result of anti-PWP2 (IP:Catalog No:114348,

4ug; Detection:Catalog No:114348 1:600) with HeLa cells lysate 2400ug.