

LSM14A antibody



Catalog Number: 112348

Product name

LSM14A antibody

IHC: 1:20-1:200

IF: 1:20-1:200

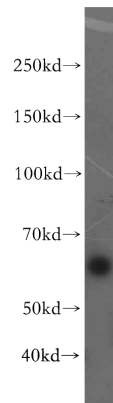
Specificity

Human, Mouse, Rat; other species not tested.

Antibody description

LSM14A Rabbit Polyclonal antibody. Positive WB detected in HepG2 cells, A549 cells, HeLa cells, PC-3 cells. Positive IF detected in HepG2 cells. Positive IHC detected in human testis tissue. Observed molecular weight by Western-blot: 60 kDa

Validations



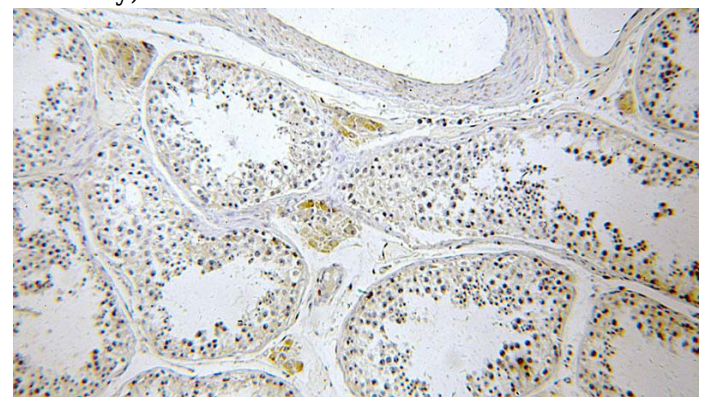
Preparation

This antibody was obtained by immunization of LSM14A recombinant protein (Accession Number: NM_015578). Purification method: Antigen affinity purified.

HepG2 cells were subjected to SDS PAGE followed by western blot with Catalog No:112348(LSM14A antibody) at dilution of 1:500

Formulation

PBS with 0.02% sodium azide and 50% glycerol pH 7.3.



Storage

Store at -20°C. DO NOT ALIQUOT

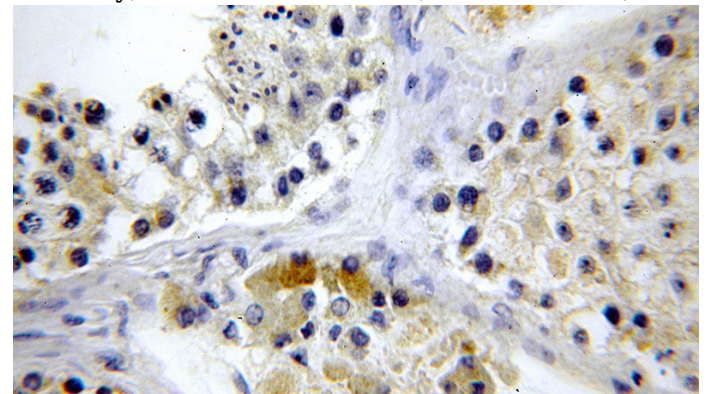
Clonality

Polyclonal

Immunohistochemical of paraffin-embedded human testis using Catalog No:112348(LSM14A antibody) at dilution of 1:100 (under 10x lens)

Ig Type

Rabbit IgG



Applications

ELISA, WB, IHC, IF

Dilutions

Recommended Dilution:

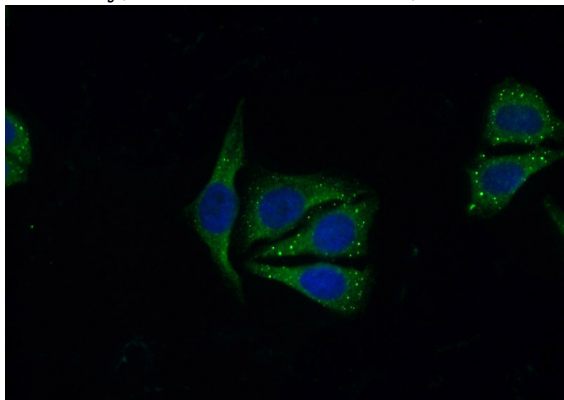
WB: 1:500-1:5000

Immunohistochemical of paraffin-embedded human testis using Catalog No:112348(LSM14A

LSM14A antibody

Catalog Number: 112348

antibody) at dilution of 1:100 (under 40x lens)



Immunofluorescent analysis of (10% Formaldehyde) fixed HepG2 cells using Catalog No:112348(LSM14A Antibody) at dilution of 1:50 and Alexa Fluor 488-conjugated AffiniPure Goat Anti-Rabbit IgG(H+L)