

# Hikeshi antibody



Catalog Number: 111348

## Product name

Hikeshi antibody

IP: 1:200-1:2000

IHC: 1:20-1:200

## Specificity

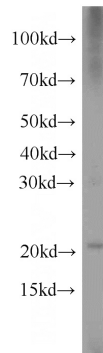
Human, Mouse, Rat; other species not tested.

IF: 1:20-1:200

## Antibody description

Hikeshi Rabbit Polyclonal antibody. Positive WB detected in PC-3 cells, A375 cells, mouse brain tissue. Positive IP detected in mouse brain tissue. Positive IHC detected in human lung tissue. Positive IF detected in A375 cells. Observed molecular weight by Western-blot: 22 kDa

## Validations



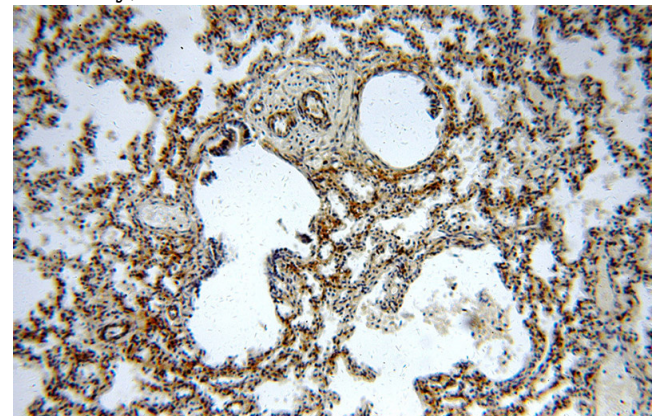
## Preparation

This antibody was obtained by immunization of Hikeshi recombinant protein (Accession Number: NM\_016401). Purification method: Antigen affinity purified.

PC-3 cells were subjected to SDS PAGE followed by western blot with Catalog No:111348(C11orf73 antibody) at dilution of 1:500

## Formulation

PBS with 0.02% sodium azide and 50% glycerol pH 7.3.



## Storage

Store at -20°C. DO NOT ALIQUOT

## Clonality

Polyclonal

## Ig Type

Rabbit IgG

## Applications

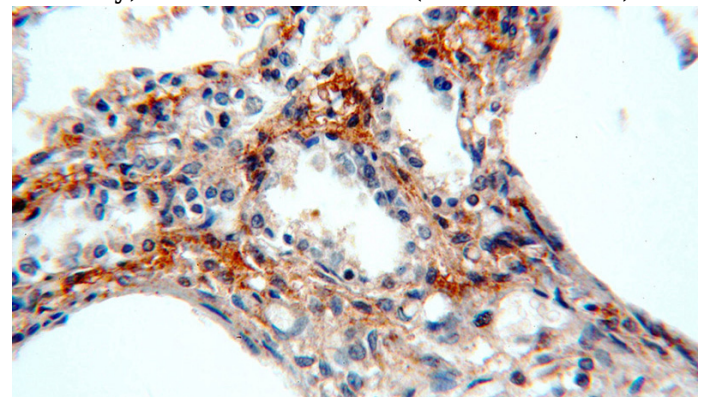
ELISA, WB, IHC, IF, IP

## Dilutions

Recommended Dilution:

WB: 1:500-1:5000

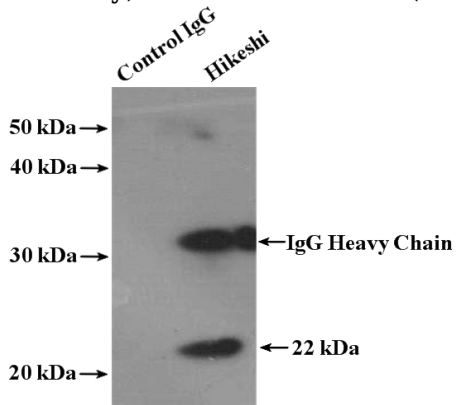
Immunohistochemical of paraffin-embedded human lung using Catalog No:111348(C11orf73 antibody) at dilution of 1:100 (under 10x lens)



# Hikeshi antibody

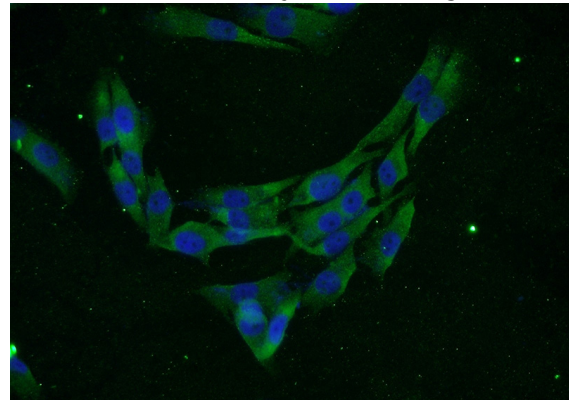
Catalog Number: 111348

Immunohistochemical of paraffin-embedded human lung using Catalog No:111348(C11orf73 antibody) at dilution of 1:100 (under 40x lens)



IP Result of anti-C11orf73 (IP:Catalog No:111348, 4ug; Detection:Catalog No:111348 1:500) with

mouse brain tissue lysate 3000ug.



Immunofluorescent analysis of A375 cells using Catalog No:111348(C11orf73 Antibody) at dilution of 1:50 and Alexa Fluor 488-conjugated AffiniPure Goat Anti-Rabbit IgG(H+L)