

EPHA1-specific antibody



Catalog Number: 110348

Product name

EPHA1-specific antibody

IP: 1:200-1:2000

IHC: 1:20-1:200

Specificity

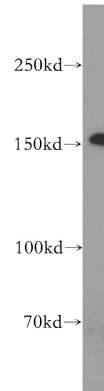
Human, Mouse; other species not tested.

IF: 1:50-1:500

Antibody description

EPHA1-specific Rabbit Polyclonal antibody. Positive IP detected in HeLa cells. Positive WB detected in A549 cells, HeLa cells. Positive IF detected in A549 cells. Positive IHC detected in human liver cancer tissue. Positive FC detected in HeLa cells. Observed molecular weight by Western-blot: 150 kDa

Validations



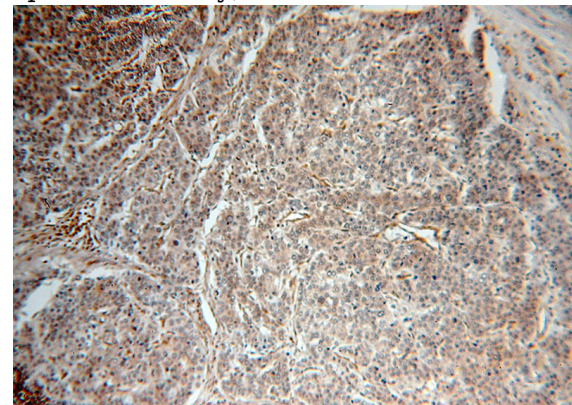
Preparation

This antibody was obtained by immunization of Peptide (Accession Number: NM_005232). Purification method: Antigen affinity purified.

A549 cells were subjected to SDS PAGE followed by western blot with Catalog No:110348(EPHA1-special antibody) at dilution of 1:800

Formulation

PBS with 0.02% sodium azide and 50% glycerol pH 7.3.



Storage

Store at -20°C. DO NOT ALIQUOT

Clonality

Polyclonal

Ig Type

Rabbit IgG

Applications

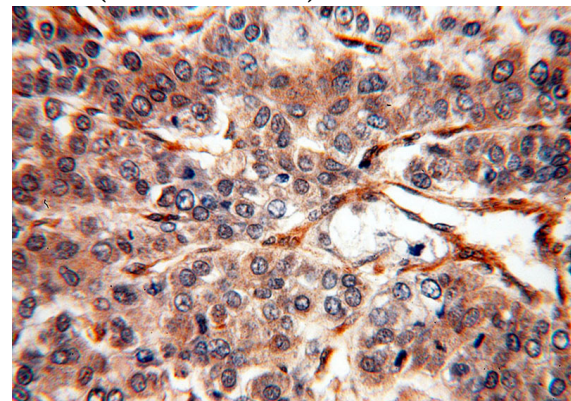
ELISA, WB, IHC, FC, IP, IF

Dilutions

Recommended Dilution:

WB: 1:500-1:5000

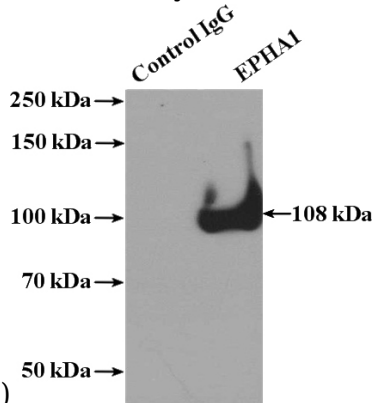
Immunohistochemical of paraffin-embedded human liver cancer using Catalog No:110348(EPHA1-special antibody) at dilution of 1:100 (under 10x lens)



EPHA1-specific antibody

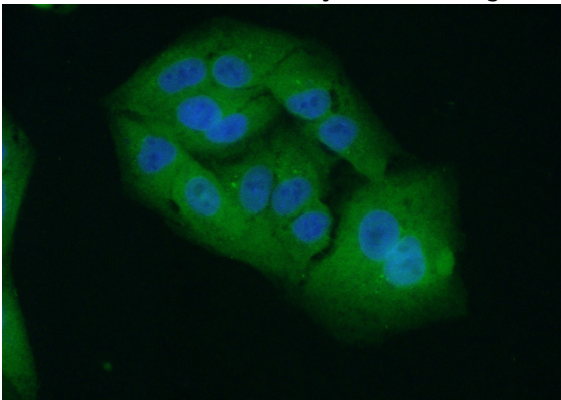
Catalog Number: 110348

Immunohistochemical of paraffin-embedded human liver cancer using Catalog No:110348(EPHA1-special antibody) at dilution of

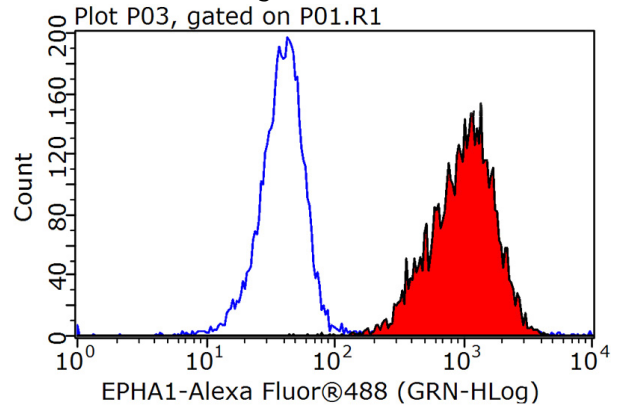


1:100 (under 40x lens)

IP Result of anti-EPHA1-special (IP:Catalog No:110348, 4ug; Detection:Catalog No:110348 1:500) with HeLa cells lysate 3200ug.



Immunofluorescent analysis of (10% Formaldehyde) fixed A549 cells using Catalog No:110348(EPHA1-special Antibody) at dilution of 1:50 and Alexa Fluor 488-conjugated AffiniPure Goat Anti-Rabbit IgG(H+L)



1×10^6 HeLa cells were stained with 0.2ug EPHA1-special antibody (Catalog No:110348, red) and control antibody (blue). Fixed with 90% MeOH blocked with 3% BSA (30 min). Alexa Fluor 488-conjugated AffiniPure Goat Anti-Rabbit IgG(H+L) with dilution 1:1000.