

# Anti-Phospho-RSK1 p90 (Thr359/Ser363) Rabbit antibody



Catalog Number: 168648

## Product name

Anti-Phospho-RSK1 p90 (Thr359/Ser363) Rabbit antibody

## Specificity

Human, Mouse, Rat

## Antibody description

Phospho-RSK1 p90 (Thr359/Ser363) Rabbit monoclonal antibody

## Preparation

Antigen: A synthetic phosphopeptide corresponding to residues surrounding Thr359/Ser363 of human RSK1 p90

## Formulation

Supplied in 50nM Tris-Glycine(pH 7.4), 0.15M NaCl, 40%Glycerol, 0.01% sodium azide and 0.05% BSA.

## Storage

Store at 4°C short term. Aliquot and store at -20°C long term. Avoid freeze / thaw cycle.

## Clonality

Monoclonal

## Ig Type

Rabbit IgG

## Applications

WB, ICC/IF, IP

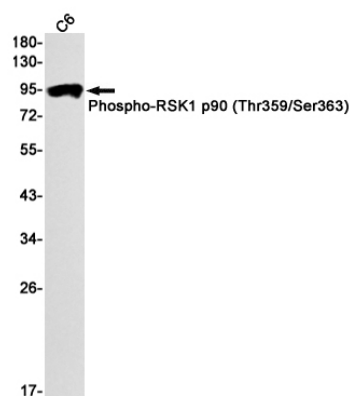
## Dilutions

WB: 1/1000

ICC/IF: 1/20

IP: 1/20

## Validations



Western blot detection of Phospho-RSK1 p90 (Thr359/Ser363) in C6 cell lysates using Phospho-RSK1 p90 (Thr359/Ser363) Rabbit mAb(1:1000 diluted). Predicted band size:83kDa. Observed band size:90kDa.