

SPRY2 antibody

Catalog Number: 115648

Product name

SPRY2 antibody

IHC: 1:20-1:200

IF: 1:10-1:100

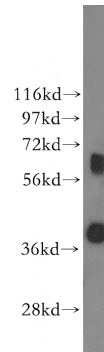
Specificity

Human, Mouse, Rat; other species not tested.

Validations

Antibody description

SPRY2 Rabbit Polyclonal antibody. Positive IHC detected in human pancreas cancer tissue. Positive IF detected in A375 cells. Positive WB detected in human duodenum tissue, A375 cells. Observed molecular weight by Western-blot: 39kd+60~65kd



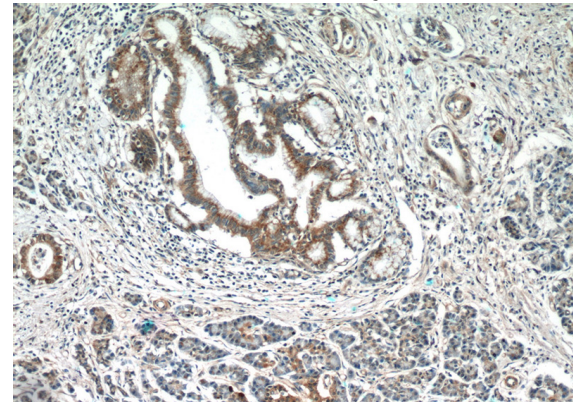
Preparation

This antibody was obtained by immunization of SPRY2 recombinant protein (Accession Number: NM_001318538). Purification method: Antigen affinity purified.

human duodenum tissue were subjected to SDS PAGE followed by western blot with Catalog No:115648(SPRY2 antibody) at dilution of 1:500

Formulation

PBS with 0.1% sodium azide and 50% glycerol pH 7.3.



Storage

Store at -20°C. DO NOT ALIQUOT

Clonality

Polyclonal

Ig Type

Rabbit IgG

Applications

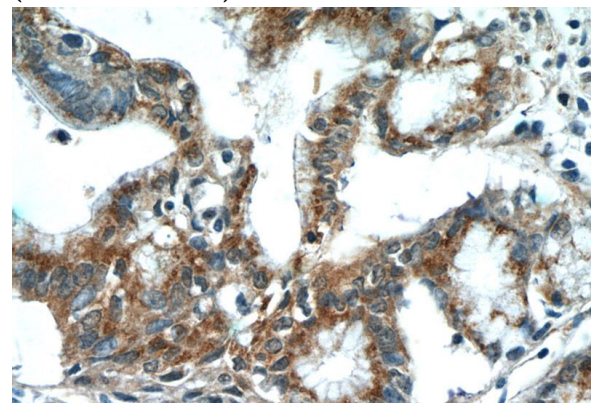
ELISA, WB, IHC, IF

Dilutions

Recommended Dilution:

WB: 1:200-1:2000

Immunohistochemistry of paraffin-embedded human pancreas cancer tissue slide using Catalog No:115648(SPRY2 Antibody) at dilution of 1:50 (under 10x lens)

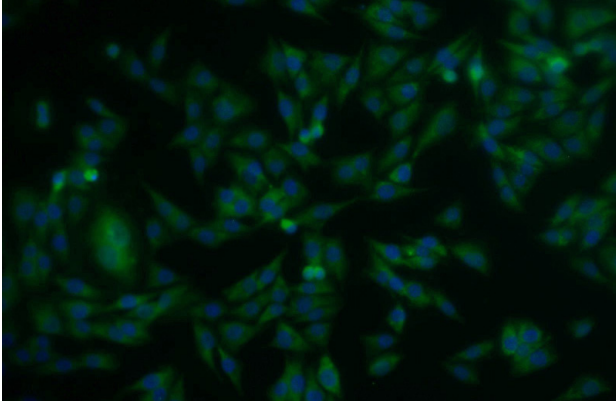


Immunohistochemistry of paraffin-embedded

SPRY2 antibody

Catalog Number: 115648

human pancreas cancer tissue slide using Catalog No:115648(SPRY2 Antibody) at dilution of 1:50 (under 40x lens)



Immunofluorescent analysis of A375 cells using Catalog No:115648(SPRY2 Antibody) at dilution of 1:25 and Alexa Fluor 488-conjugated AffiniPure Goat Anti-Rabbit IgG(H+L)