

RGS5 antibody



Catalog Number: 114648

Product name

RGS5 antibody

Specificity

human, mouse, rat; other species not tested.

Antibody description

RGS5 Rabbit Polyclonal antibody. Positive WB detected in human heart tissue, human skeletal muscle tissue, MCF7 cells, mouse heart tissue, mouse skeletal muscle tissue, rat skeletal muscle tissue. Positive IHC detected in human prostate cancer. Observed molecular weight by Western-blot: 42kd

Preparation

This antibody was obtained by immunization of RGS5 recombinant protein (Accession Number: NM_003617). Purification method: Antigen affinity purified.

Formulation

PBS with 0.02% sodium azide and 50% glycerol pH 7.3.

Storage

Store at -20°C. DO NOT ALIQUOT

Clonality

Polyclonal

Ig Type

Rabbit IgG

Applications

ELISA, WB, IHC

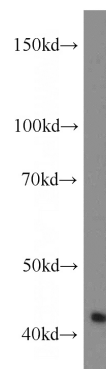
Dilutions

Recommended Dilution:

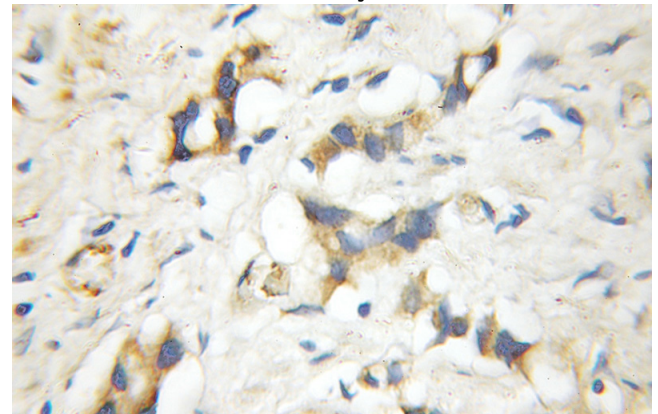
WB: 1:500-1:5000

IHC: 1:20-1:200

Validations



human heart tissue were subjected to SDS PAGE followed by western blot with Catalog No:114648(RGS5 antibody) at dilution of 1:400



Immunohistochemical of paraffin-embedded human prostate cancer using Catalog No:114648(RGS5 antibody) at dilution of 1:50 (under 10x lens)