

Human IL-1 beta recombinant protein



Catalog Number: 503648

General Information

Gene Name Synonym

Catabolin

Protein Construction

A DNA sequence encoding the mature form of human IL1 β (NP_000567.1) (Ala 117-Ser 269) was expressed.

Organism

Human

Expression Host

E. coli

QC Testing

Activity

1. Measured by its binding ability in a functional ELISA. Immobilized recombinant human IL1B at 2 $\mu\text{g}/\text{mL}$ (100 μl /well) can bind recombinant human IL1R2 with a linear range of 6.25-400 ng/ml.
2. Measured in a cell proliferation assay using D10.G4.1 mouse helper T cells. The ED_{50} for this effect is typically 2-8 $\mu\text{g}/\text{mL}$.
3. Measured by its binding ability in a functional ELISA.
4. Immobilized human IL1B at 10 $\mu\text{g}/\text{mL}$ (100 μl /well) can bind human IL1R1, The EC_{50} of human IL1R1 is 0.48 $\mu\text{g}/\text{mL}$.

Purity

> 95 % as determined by SDS-PAGE

Endotoxin

Please contact us for more information.

Stability

Samples are stable for up to twelve months from

date of receipt at -70°C

Predicted N terminal

Met

Molecular Mass

The recombinant human IL1 β consisting of 154 amino acids migrates with an apparent molecular mass of 17 kDa as estimated in SDS-PAGE under reducing conditions.

Formulation

Lyophilized from sterile PBS, pH 7.4

1. 5 % trehalose and mannitol are added as protectants before lyophilization.

2. Please contact us for any concerns or special requirements.

Usage Guide

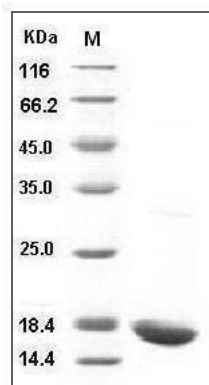
Storage

Store it under sterile conditions at -20°C to -80°C. It is recommended that the protein be aliquoted for optimal storage. Avoid repeated freeze-thaw cycles.

Reconstitution

Adding sterile water, prepare a stock solution of 0.25 mg/mL . Concentration is measured by UV-Vis.

SDS-PAGE



Human IL-1 beta / IL1B Protein SDS-PAGE