

# Anti-Semaphorin 4A/SEMA4A/Semaphorin B antibody



Catalog Number: 103648

## Product name

Anti-Semaphorin 4A/SEMA4A/Semaphorin B antibody

## Immunogen

[Human Semaphorin 4A/SEMA4A/Semaphorin B \(His Tag\) recombinant protein](#)

## Specificity

Human Semaphorin 4A / SEMA4A / Semaphorin B

## Antibody description

Rabbit polyclonal to Semaphorin 4A/SEMA4A/Semaphorin B

## Preparation

Produced in rabbits immunized with purified, recombinant Human Semaphorin 4A / SEMA4A / Semaphorin B (rh Semaphorin 4A / SEMA4A / Semaphorin B; NP\_071762.2; Met 1-His 683). Semaphorin 4A / SEMA4A / Semaphorin B specific IgG was purified by Human Semaphorin 4A / SEMA4A / Semaphorin B affinity chromatography.

## Formulation

0.2 µm filtered solution in PBS with 5% trehalose

## Storage

This antibody can be stored at 2°C-8°C for one month without detectable loss of activity. Antibody products are stable for twelve months from date of receipt when stored at -20°C to -80°C. Preservative-Free.

Sodium azide is recommended to avoid contamination (final concentration 0.05%-0.1%). It is toxic to cells and should be disposed of properly. Avoid repeated freeze-thaw cycles.

## Clonality

Polyclonal

## Ig Type

Rabbit IgG

## Applications

ELISA, WB, IP

## Dilutions

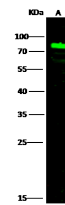
WB: 10-20 µg/mL

ELISA: 0.1-0.2 µg/mL

This antibody can be used at 0.1-0.2 µg/mL with the appropriate secondary reagents to detect Human SEMA4A. The detection limit for Human SEMA4A is approximately 0.00245 ng/well.

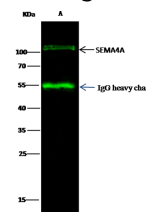
IP: 1-4 µg/mg of lysate

## Validations



Lanes	A
Items	
Sample (Membrane lysate)	Jurkat
Sample Volume (µg/lane)	20
Gel	13% SDS-PAGE reducing gel
Recommended Concentration	10-20 µg/ml
Secondary Antibody	DyLight 800 Labeled Antibody To Rabbit IgG (F11), at 1:5000 dilution. Developed using Odyssey imaging system.
Explanation	Predicted band size : 84 kDa Observed band size : 84 kDa

Semaphorin 4A / SEMA4A / Semaphorin B Antibody, Rabbit PAb, Antigen Affinity Purified,



Lanes	A
Items	
Sample (whole cell lysate)	Jurkat
Sample quantity	0.5 mg
IP antibody quantity	2 µg
Protein G agarose	15 µl of 50% Protein G Agarose
Gel	13% SDS-PAGE reducing gel
Primary antibody	SEMA4A antibody at 10 µg/ml [Cat# 11756-RP02]
Secondary antibody	DyLight 800-labeled antibody to rabbit IgG (F11) at 1:5000 dilution

Western blot

Semaphorin 4A / SEMA4A / Semaphorin B

# Anti-Semaphorin 4A/SEMA4A/Semaphorin B antibody



Catalog Number: 103648

---

Antibody, Rabbit PAb, Antigen Affinity Purified