

# APEH Polyclonal Antibody

Catalog Number: 161648

## Product name

APEH Polyclonal Antibody

## Specificity

Human, Mouse, Rat

## Antibody description

Polyclonal antibody to APEH

## Preparation

Antigen: Recombinant fusion protein containing a sequence corresponding to amino acids 1-260 of human APEH (NP\_001631.3).

## Formulation

PBS with 0.02% sodium azide, 50% glycerol, pH7.3.

## Storage

Store at -20°C. Avoid freeze / thaw cycles.

## Clonality

Polyclonal

## Ig Type

Rabbit IgG

## Applications

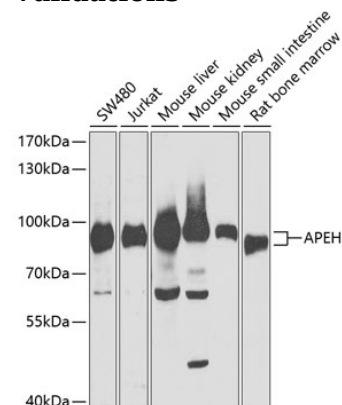
WB, IF

## Dilutions

WB 1:500 - 1:2000

IF 1:50 - 1:200

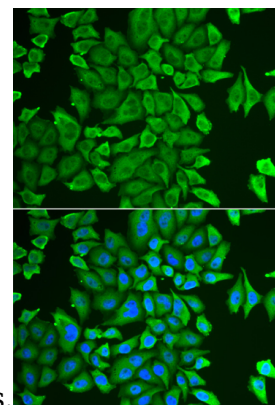
## Validations



Western blot - APEH Polyclonal Antibody

Western blot analysis of extracts of various cell lines, using APEH antibody at 1:1000 dilution. Secondary antibody: HRP Goat Anti-Rabbit IgG (H+L) at 1:10000 dilution. Lysates/proteins: 25ug per lane. Blocking buffer: 3% nonfat dry milk in TBST. Detection: ECL

Basic Kit .Exposure time: 30s.



Immunofluorescence - APEH Polyclonal Antibody

Immunofluorescence analysis of HeLa cells using APEH antibody . Blue: DAPI for nuclear staining.