

# Anti-PEG3 antibody

Catalog Number: 176248

---

**Product name**

Anti-PEG3 antibody

**Specificity**

Human

**Antibody description**

Rabbit polyclonal antibody to PEG3

**Preparation**

This antigen of this antibody was the antiserum was produced against synthesized peptide derived from human peg3. aa range:1031-1080

**Formulation**

Liquid, Liquid in PBS containing 50% glycerol, 0.5% BSA and 0.02% sodium azide.

**Storage**

Store at +4°C after thawing. Aliquot store at -20°C or -80°C. Avoid repeated freeze / thaw cycles.

**Clonality**

Polyclonal

**Ig Type**

Rabbit IgG

**Applications**

WB

**Dilutions**

WB: 1:500-1:2000

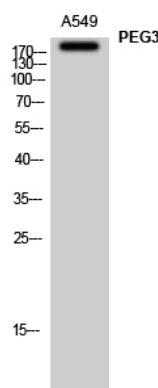
**Validations**

Fig1.; Western Blot analysis of A549 cells using PEG3 Polyclonal Antibody