

# PSME3 antibody

Catalog Number: 114248

## Product name

PSME3 antibody

## Specificity

Human, Mouse, Rat; other species not tested.

## Antibody description

PSME3 Rabbit Polyclonal antibody. Positive WB detected in human colon tissue, mouse spleen tissue. Positive IP detected in COLO 320 cells. Positive IHC detected in human colon cancer tissue, human brain tissue, human heart tissue, human kidney tissue, human lung tissue, human ovary tissue, human placenta tissue, human skin tissue, human spleen tissue, human testis tissue. Positive IF detected in HepG2 cells. Observed molecular weight by Western-blot: 30 kDa

## Preparation

This antibody was obtained by immunization of PSME3 recombinant protein (Accession Number: NM\_005789). Purification method: Antigen affinity purified.

## Formulation

PBS with 0.02% sodium azide and 50% glycerol pH 7.3.

## Storage

Store at -20°C. DO NOT ALIQUOT

## Clonality

Polyclonal

## Ig Type

Rabbit IgG

## Applications

ELISA, WB, IHC, IF, IP

## Dilutions

Recommended Dilution:

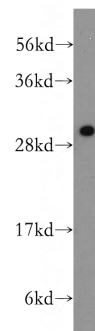
WB: 1:200-1:2000

IP: 1:200-1:2000

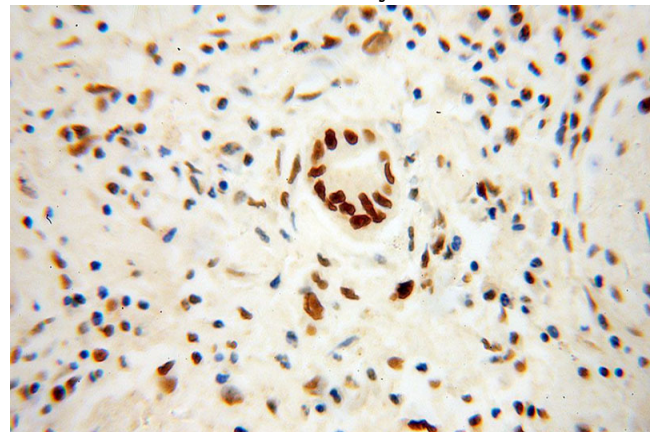
IHC: 1:20-1:200

IF: 1:10-1:100

## Validations



human colon tissue were subjected to SDS PAGE followed by western blot with Catalog No:114248(PSME3 antibody) at dilution of 1:500

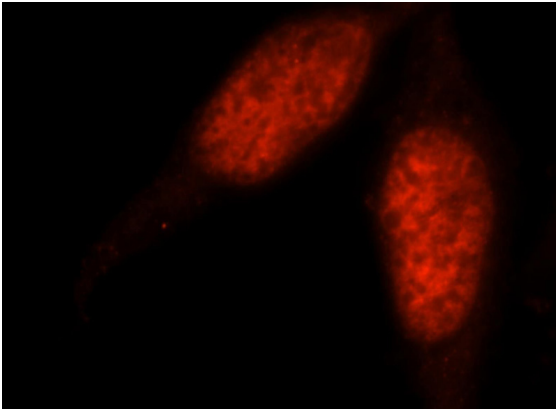


Immunohistochemical of paraffin-embedded human colon cancer using Catalog No:114248(PSME3 antibody) at dilution of 1:500 (under 40x lens)

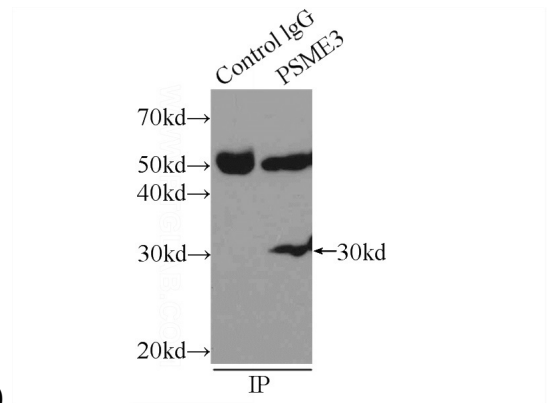
# PSME3 antibody

Catalog Number: 114248

---



Immunofluorescent analysis of HepG2 cells, using PSME3 antibody Catalog No:114248 at 1:25 dilution and Rhodamine-labeled goat anti-rabbit



IgG (red).

IP Result of anti-PSME3 (IP:Catalog No:114248, 3ug; Detection:Catalog No:114248 1:500) with COLO 320 cells lysate 2000ug.