

GUCY1A3 antibody



Catalog Number: 111248

Product name

GUCY1A3 antibody

WB: 1:500-1:5000

IP: 1:200-1:2000

Specificity

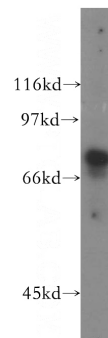
Human, Mouse, Rat; other species not tested.

IHC: 1:20-1:200

Antibody description

GUCY1A3 Rabbit Polyclonal antibody. Positive IHC detected in human heart tissue. Positive IP detected in mouse lung tissue. Positive WB detected in human brain tissue, human cerebellum tissue, human kidney tissue, mouse lung tissue. Observed molecular weight by Western-blot: 77 kDa

Validations



Preparation

This antibody was obtained by immunization of GUCY1A3 recombinant protein (Accession Number: NM_001379670). Purification method: Antigen affinity purified.

human brain tissue were subjected to SDS PAGE followed by western blot with Catalog No:111248(GUCY1A3 antibody) at dilution of

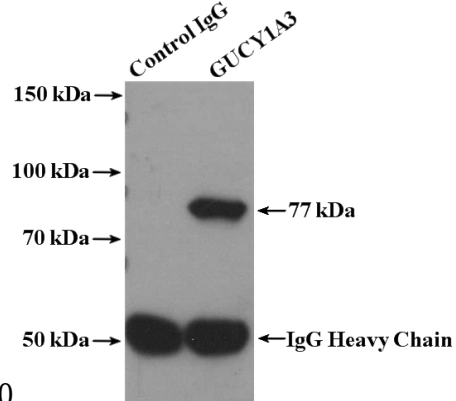
Formulation

PBS with 0.1% sodium azide and 50% glycerol pH 7.3.

1:400

Storage

Store at -20°C. DO NOT ALIQUOT



Clonality

Polyclonal

IP Result of anti-GUCY1A3 (IP:Catalog No:111248, 4ug; Detection:Catalog No:111248 1:500) with mouse lung tissue lysate 3600ug.

Ig Type

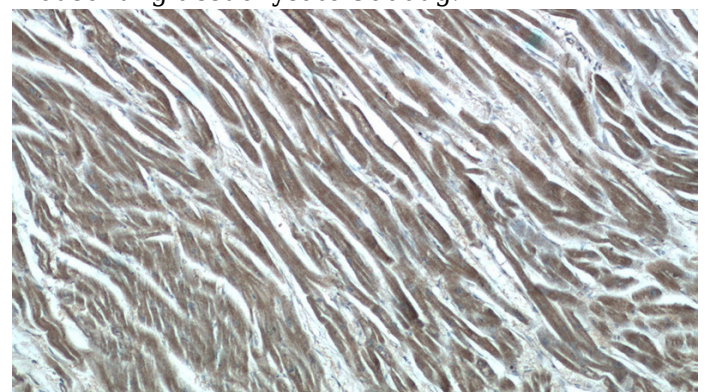
Rabbit IgG

Applications

ELISA, WB, IHC, IP

Dilutions

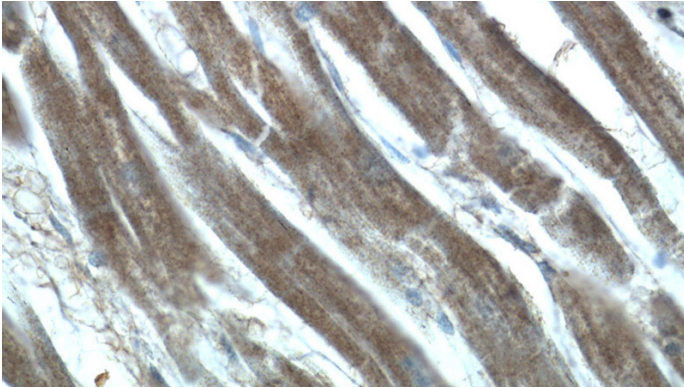
Recommended Dilution:



GUCY1A3 antibody

Catalog Number: 111248

Immunohistochemistry of paraffin-embedded human heart tissue slide using Catalog No:111248(GUCY1A3 Antibody) at dilution of 1:50 (under 10x lens)



Immunohistochemistry of paraffin-embedded human heart tissue slide using Catalog No:111248(GUCY1A3 Antibody) at dilution of 1:50 (under 40x lens)