

Anti-ARTS1/ERAP1 Rabbit antibody



Catalog Number: 168948

Product name

Anti-ARTS1/ERAP1 Rabbit antibody

Specificity

Human, Mouse, Rat

Antibody description

ARTS1/ERAP1 Rabbit monoclonal antibody

Preparation

Antigen: A synthetic peptide of human ARTS1

Formulation

50nM Tris-Glycine(pH 7.4), 0.15M NaCl, 40%Glycerol, 0.01% sodium azide and 0.05% BSA.

Storage

Store at 4°C short term. Store at -20°C long term. Avoid freeze / thaw cycle.

Clonality

Monoclonal

Ig Type

Rabbit IgG

Applications

WB, IHC-P, ICC/IF, FC

Dilutions

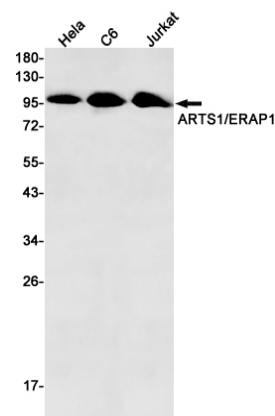
WB: 1/1000-1/2000

IHC: 1/20-1/50

ICC/IF: 1/50-1/100

FC: 1/50

Validations



Western blot detection of ARTS1/ERAP1 in HeLa, C6, Jurkat cell lysates using ARTS1/ERAP1 Rabbit mAb(1:500 diluted). Predicted band size: 107kDa. Observed band size: 107kDa.