

AKT1 antibody

Catalog Number: 107948

Product name

AKT1 antibody

Specificity

Human, Mouse, Rat, Zebrafish; other species not tested.

Antibody description

AKT1 Rabbit Polyclonal antibody. Positive WB detected in HeLa cells, A549, A549 cells, HepG2 cells, human liver tissue, mouse testis tissue, siRNA cells. Positive IP detected in HeLa cells. Positive FC detected in HeLa cells. Positive IHC detected in human cervical cancer tissue, human breast cancer tissue, human ovary tumor tissue. Positive IF detected in HeLa cells. Observed molecular weight by Western-blot: 62 kDa

Preparation

This antibody was obtained by immunization of AKT1 recombinant protein (Accession Number: NM_001382430). Purification method: Antigen affinity purified.

Formulation

PBS with 0.02% sodium azide and 50% glycerol pH 7.3.

Storage

Store at -20°C. DO NOT ALIQUOT

Clonality

Polyclonal

Ig Type

Rabbit IgG

Applications

ELISA, WB, IHC, IP, FC, IF

Dilutions

Recommended Dilution:

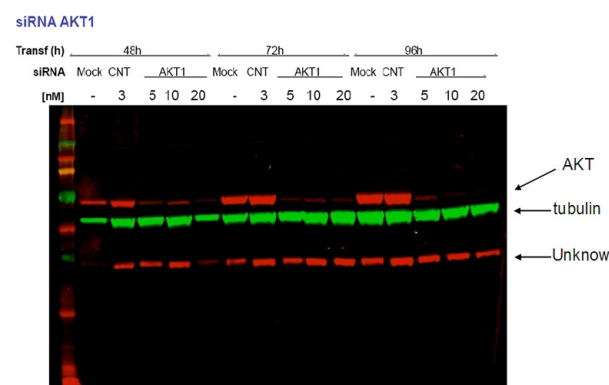
WB: 1:200-1:2000

IP: 1:200-1:2000

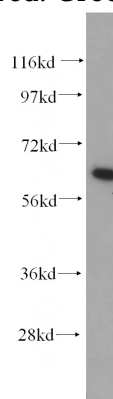
IHC: 1:20-1:200

IF: 1:50-1:500

Validations



siRNA AKT1 result from Dr. Eva Martinez-Balibrea. Green:tubulin, Red:Catalog No:107948,

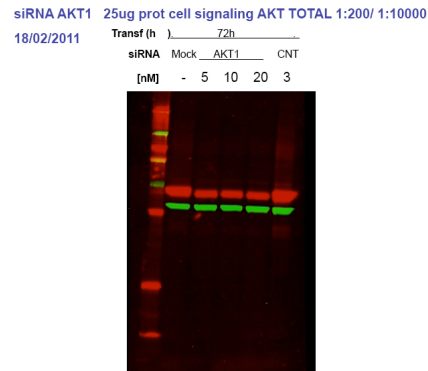
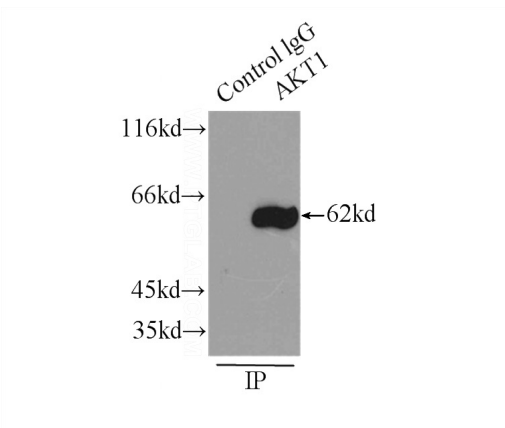


AKT1.

HeLa cells were subjected to SDS PAGE followed by western blot with Catalog No:107948(AKT antibody) at dilution of 1:500

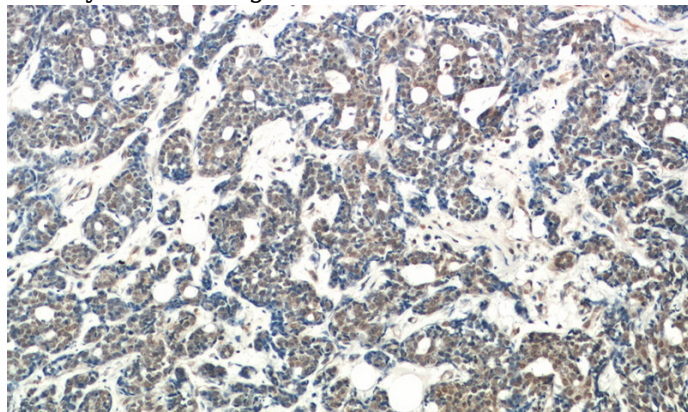
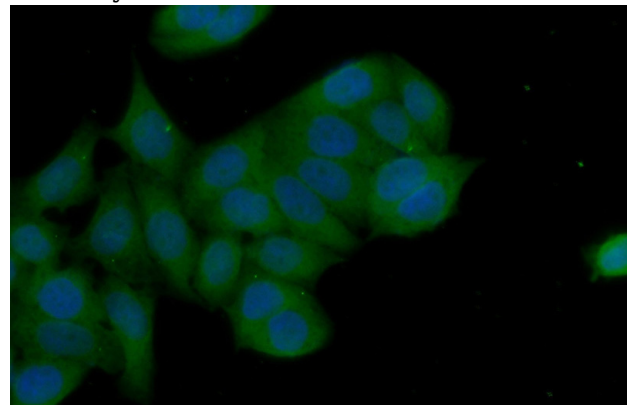
AKT1 antibody

Catalog Number: 107948



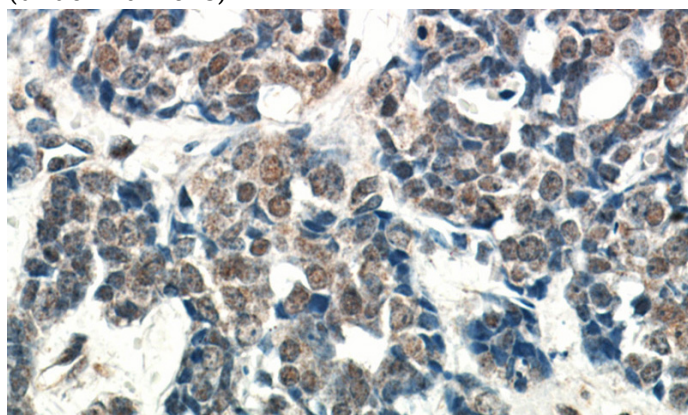
IP Result of anti-AKT (IP:Catalog No:107948, 3ug; Detection:Catalog No:107948 1:500) with HeLa cells lysate 2500ug.

Control:siRNA AKT1 result with Pan-AKT antibody. From Dr.Eva Martinez-Balibrea.



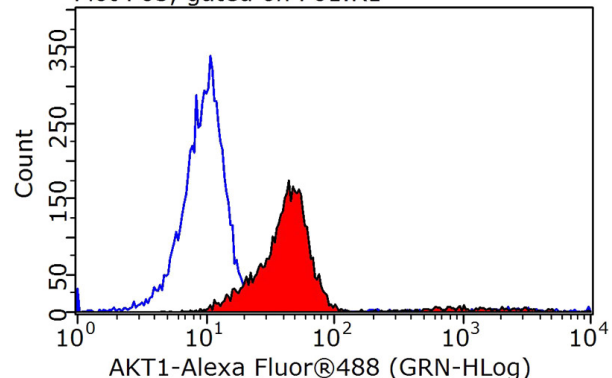
Immunohistochemical of paraffin-embedded human cervical cancer using Catalog No:107948(AKT antibody) at dilution of 1:50 (under 10x lens)

Immunofluorescent analysis of (10% Formaldehyde) fixed HeLa cells using Catalog No:107948(AKT Antibody) at dilution of 1:50 and Alexa Fluor 488-conjugated AffiniPure Goat Anti-Rabbit IgG(H+L)



Immunohistochemical of paraffin-embedded human cervical cancer using Catalog No:107948(AKT antibody) at dilution of 1:50 (under 40x lens)

Plot P03, gated on P01.R1



1X10⁶ HeLa cells were stained with 0.2ug AKT antibody (Catalog No:107948, red) and control antibody (blue). Fixed with 90% MeOH blocked with 3% BSA (30 min). Alexa Fluor 488-conjugated AffiniPure Goat Anti-Rabbit IgG(H+L) with dilution 1:1000.