

Anti-Insulin degrading enzyme/IDE Rabbit antibody



Catalog Number: 167948

Product name

Rabbit IgG

Anti-Insulin degrading enzyme/IDE Rabbit antibody

Applications

WB, ICC/IF, FC

Specificity

Human, Mouse, Rat

Dilutions

WB: 1/2000-1/10000

Antibody description

Insulin degrading enzyme/IDE Rabbit monoclonal antibody

ICC/IF: 1/20

FC: 1/20

Preparation

Antigen: A synthetic peptide of human Insulin degrading enzyme/IDE

Validations

Formulation

50nM Tris-Glycine(pH 7.4), 0.15M NaCl, 40%Glycerol, 0.01% sodium azide and 0.05% BSA

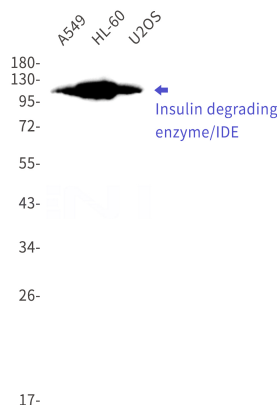
Storage

Store at 4°C short term. Store at -20°C long term. Avoid freeze / thaw cycle.

Clonality

Monoclonal

Ig Type



Western blot detection of Insulin degrading enzyme/IDE in A549,HL-60,U2OS cell lysates using Insulin degrading enzyme/IDE Rabbit mAb(1:1000 diluted).Predicted band size:118kDa.Observed band size:118kDa.