

# ITIH3 antibody



Catalog Number: 111948

## Product name

ITIH3 antibody

IP: 1:500-1:5000

IHC: 1:20-1:200

## Specificity

Human, Mouse, Rat; other species not tested.

## Antibody description

ITIH3 Rabbit Polyclonal antibody. Positive IHC detected in human stomach cancer tissue. Positive IP detected in human plasma tissue. Positive WB detected in human serum tissue. Observed molecular weight by Western-blot: 100 kDa

## Preparation

This antibody was obtained by immunization of ITIH3 recombinant protein (Accession Number: NM\_002217). Purification method: Antigen affinity purified.

## Formulation

PBS with 0.1% sodium azide and 50% glycerol pH 7.3.

## Storage

Store at -20°C. DO NOT ALIQUOT

## Clonality

Polyclonal

## Ig Type

Rabbit IgG

## Applications

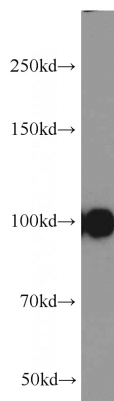
ELISA, WB, IHC, IP

## Dilutions

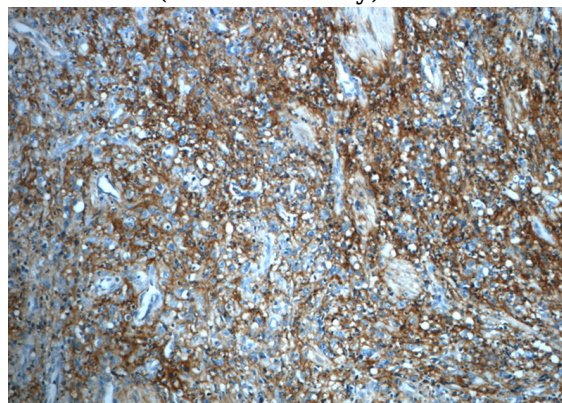
Recommended Dilution:

WB: 1:500-1:5000

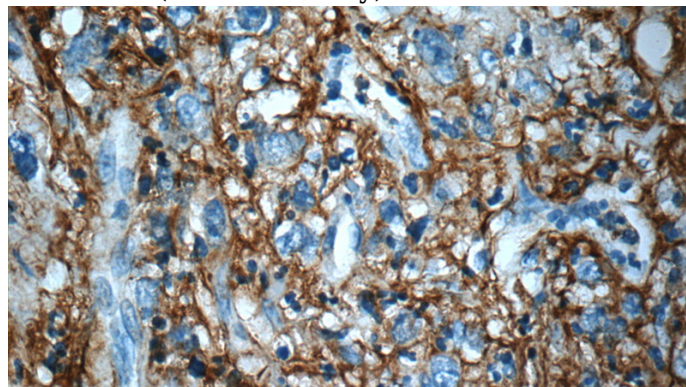
## Validations



human serum tissue were subjected to SDS PAGE followed by western blot with Catalog No:111948(ITIH3 antibody) at dilution of 1:1000



Immunohistochemistry of paraffin-embedded human stomach cancer slide using Catalog No:111948(ITIH3 Antibody) at dilution of 1:50



Immunohistochemistry of paraffin-embedded human stomach cancer slide using Catalog

# ITIH3 antibody

Catalog Number: 111948

---

No:111948(ITIH3 Antibody) at dilution of 1:50

IP Result of anti-ITIH3 (IP:Catalog No:111948, 4ug; Detection:Catalog No:111948 1:1000) with human plasma tissue lysate 4000ug.

